

PLUGGED IN!

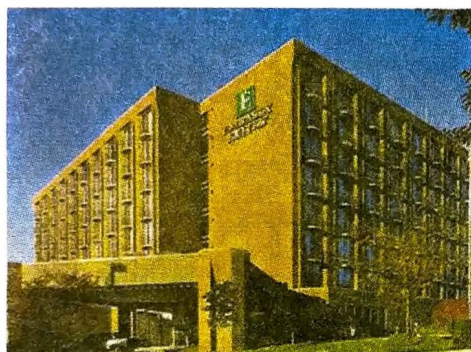
THE OFFICIAL NEWSLETTER OF ELECTRIC FOOTBALL

Fall 2005, Vol. XI No. 2

BALTIMORE TO HOST OFFICIAL 2006 EFL CONVENTION

From the powerful arm of Johnny Unitas to the crunching hits of Ray Lewis, Baltimore has long been a city where toddlers have been given pigskins for their first birthdays and youngsters' bed time stories have consisted of their parents' memories of the two Super Bowls the city's teams have won.

You can hear the buzz in "Charm City" already. That's because EFL Commissioner **Michael Landsman** has just announced that the **12th Annual Official Electric Football Super Bowl & Convention** will be held in Baltimore from January 27-29, 2006.



The inviting Embassy Suites Hotel in Hunt Valley, MD, will be host to the 2006 Miggle Electric Football Convention.

For the third consecutive year, the host venue will be an **Embassy Suites Hotel**; in 2006 it will be the **Baltimore North** property in **Hunt Valley, MD**. This arrangement by Michael Landsman and his wife, Delayne, continues the popular tradition of providing Convention guests with two-room suite accommodations and plenty of "perks" for the price of just a regular hotel room.

Another admired practice first introduced at last year's Convention also will be renewed at the January '06 event—the **round-robin format** for the Super Bowl Tournament that guarantees every attendee the opportunity to play a minimum of seven games within their assigned Division.

"We believe we now have the recipe for the perfect Official Electric Football Convention," the Landsmans stated. "First, we feel Baltimore possesses all of the ingredients we look for in a host city—a great location on the East Coast that is easy to reach by car, bus and plane; a large Electric Football community in the region; a long and storied football legacy; and attractions and restaurants of interest to all members of the family.

"Additionally," the Landsmans continued, "our new tournament format added tremendous electricity and excitement to our Convention earlier this year—so we look for it to be an even bigger and better success in 2006!"

With a pro football heritage that includes a victory in Super Bowl V by the Colts and a win in Super Bowl XXXV by the Ravens, Baltimore is the ideal location to host a weekend that promises to provide attendees with constant activity and action, plenty of surprises and prizes and fun and challenging competition for adults, teens and youngsters.

The Miggle Convention has become a "must attend" among hardened Electric Football aficionados, casual fans and families alike. From the traditional **Welcome Reception & Dinner** (free) hosted by Miggle and produced by **Delayne Landsman** that kicks off the weekend to the Super Bowl tournament for adults, the ever-growing Jr. & Sr. Spark Bowl tourneys for kids, the creative and entertaining exhibit booths and the unending supply of raffle gifts,

the Convention promises to be an unforgettable three-day experience.

About the Host Hotel

Conveniently located just minutes from Baltimore's many family attractions, this Embassy Suites property offers complimentary daily cooked-to-order breakfasts and early evening cocktail receptions; free parking; a fitness center with indoor pool and sauna; and guest rooms with a living area, separate bedroom and galley kitchen with microwave, refrigerator and coffee maker. Miggle has been able to negotiate all these amenities for the remarkable rate of just \$89 per suite.

Make Your Reservations Early!

To be guaranteed the special \$89 per suite per night rate, call (410) 584-1400 or toll free at (800) 362-2779 as soon as possible and ask for the "Special Electric Football Rate." ■

INSIDE THIS ISSUE OF PLUGGED IN!

- 2 Letter From The Commissioner and Inside A Friendship story**
- 3 Getting Connected With... A College QB of Renown and Watt's Current at Miggle**
- 4 More Great EFL Memories**
- 5 Hot Wires!, #620 Board Survey & The Inside Track on Side Rails**
- 6 Playing Tips from Champions & Dog Pound Heaven**
- 7 Ringing in a New Year & TGIF EFL**
- 8 Super Bowl 12 Forms & Driving Distances to Baltimore**
- 9 Convention Schedule & Things To Do In Baltimore**
- 10-16 Miggle Products and Order Form**

Tudor Games, Electric Football, EFL & Electric Football League are registered trademarks of Miggle Toys, Inc.

NFL and the NFL Shield, NFL Team Names and Logos and the name 'Super Bowl' are registered trademarks of the National Football League, and have been approved for use by Miggle Toys in its product category by the NFL.

PRAYERS FOR HURRICANE VICTIMS

Everyone at Miggle Toys would like to send out our heartfelt prayers to all members of our Electric Football family in the South and Southwest that were devastated by Hurricanes Katrina and Rita.

At press time, we were able to reach out to some of our friends in the region, but were not

able to confirm the safety and well-being of everyone. If you did not hear from us, please know that we tried to reach you and that our thoughts are with you and your families at this very difficult time. We hope that when things start to return to the more routine for you, that you will drop us a line and share your stories and needs with us. ■



A LETTER FROM THE COMMISSIONER

Michael Landsman



Michael Landsman,
Commissioner

Once again, it has been a sad and challenging period of time for our Electric Football family.

As many of you know, when the President sent our military personnel overseas to protect America's security interests in late 2001, several of the service people assigned and called were avid Electric Football coaches.

Throughout the various campaigns in the Middle East, they have kept in touch with us via e-mails, photos and the U.S. mail. Through this newsletter, our Miggle.com chatboard and individual correspondences, we all let these valiant men and women know we support them and we pray for their safe return.

We now must turn our hearts to our own countrymen and women in New Orleans and other Gulf Coast areas hit so hard by Hurricanes Katrina and Rita. While as a group we wanted to share our thoughts and well wishes on the front page of this edition of PLUGGED IN!, I personally wish

to add my own prayers that life will soon return to some type of normalcy in the not too distant future for these stricken individuals.

Ironically, I was originally planning to start this Letter by commenting about how strongly I have seen the Electric Football community come together in the past few years. Everywhere I turn, there seems to be a tremendous sense of adults, teens and youngsters all working together, with the common goals of growing the hobby, helping each other whenever possible and sharing both good and distressing situations with one another.

All of this togetherness and camaraderie has resulted in the sport currently enjoying the largest number of leagues that we have ever had. And many of these EFLers feature one or more "second generation" coaches who don't just fill out a league's roster—they *actually compete at the very highest levels possible against their dads, moms and the other elders.*

That's why Electric Football continues to be America's #1 tabletop sports game for the entire family.

And, as many of you know, our family of games has expanded in the past year. As such, I wish to call to your attention our newest items to make your gift giving very special. Our Sweepstakes

PLUGGED IN!

Fall 2005, Volume 11 No. 2

Published by
Miggle Toys, Inc.
1384 Sheridan Road
Highland Park, IL 60035
Phone: (847) 432-0140
Toll Free: (877) 432-0140
Fax: (847) 432-3140
E-Mail: Info@miggle.com

Publisher & Editor Delayne Landsman
Copywriter/Layout Ira H. Silverman/
Mark Schlosser, Silverman
Media&Marketing
Group, Inc.

Design Joei Shavitz

Subscription Information: Send check or
money order for \$4.00 payable to
Miggle Toys/PLUGGED IN!, 1384 Sheridan
Road, Highland Park, IL 60035

Derby Electric Horse Racing game, Speedway
Auto Racing game and Portable Electric Football
games are all battery operated and can be played
anywhere, anytime. These games are great values
at \$29.95 each, and are challenging and fun to play.
Our newest game, International Soccer, will be posted
on our website when it arrives in our warehouse.

See you around the metal gridiron!

Michael Landsman

Commissioner, Electric Football League
President, Miggle Toys, Inc. ■

TWIN BROTHERS OF DIFFERENT MOTHERS?

When Electric Football coaches get together, they almost always look for things they have in common, and not for any differences that might exist between them.

Such was the case with **Mark Kistner** of Bloomington, IL, and **Chris Stacey** of Hampton, VA, when their business association developed into a close friendship.

Sure, Mark is divorced with two children and five grandkids, works in commercial printing sales, roots for the Chicago Bears and loves the music of Foreplay...while Chris has never been married, has been retired since 1999, cheers for the Minnesota Vikings and is a big Beatles fan. Those are only small things compared to where their lives overlap.

Actually, this story begins a year and a half ago when Kistner, renowned among EF coaches for creating and designing incomparable field covers and other unique EF accessories, was



Mark Kistner



Chris Stacey

designing and creating some new boards—but needed one additional item, a goal post. A friend of his suggested that he contact Stacey, who was producing goal posts—and an immediate connection was formed. Not only was Kistner thrilled with Stacey's goal posts, but on a much deeper level the two

began to realize the striking and often eerily similar roads their lives had taken.

Frequent conversations between the two of them yielded several remarkable coincidences: they both were born in 1956; they both had begun playing Electric Football before their teenage years; they both had gone to Marine Boot Camp, Kistner first in '74 in San Diego and Stacey a year later across the country in Parris Island, SC; they both still play Electric Football in their own Solitaire Leagues; *and they both had serious episodes with their hearts several years ago* (Stacey suffered a heart attack and had bypass

surgery, while Kistner experienced two separate incidences four years ago that were both initially diagnosed as heart attacks).

Nevertheless, it was the beginning of a beautiful friendship.

"Originally, the goal posts kept us in touch with each other, because I constantly needed what he was making," Kistner commented. "When it started, I had no idea how much we were going to have in common—but now it's a bond that's really important to us."

"It's amazing how much we really do have in common," added Stacey. "And our friendship is all because we met through the hobby."

Amazingly, there still is one thing missing between the two EFL Coaches: Even though there have been countless conversations and communications between the two of them over the past 18 months—they **have never met in person!** That could change, however, with the 2006 EFL Convention in Baltimore this coming January.

Miggle: makers of great games and great friendships!

To contact Mark Kistner, write MarkIL43@aol.com; to contact Chris Stacey, write: usmc1775@cox.net. ■



GETTING CONNECTED WITH...DON McPHERSON



Donald McPherson

Donald McPherson was born and raised on Long Island, earned a scholarship to play quarterback at Syracuse University, led the Orangemen to an undefeated 1987 season and finished second in the Heisman Trophy voting that year.

During his seven-year pro football career in the NFL and CFL, McPherson became involved in numerous civic activities in every city in which he played, both in the U.S. and in Canada. Most of this work was in the area of youth sports through the Athletes Helping Athletes program he developed.

Today, Don is the Founder and Executive Director of the Sports Leadership Institute at Adelphi

University on Long Island, NY, whose mission is to "return altruism to sport." Through community service programs, research and special projects, the Institute focuses on the positive, educational and nurturing life lessons of sport.

McPherson has lectured on more than 100 college campuses, appeared on Oprah and testified before the US Congress on two occasions.

An avid Electric Football player as a youngster, Don McPherson recently sat down with **PLUGGED IN!** and discussed one of his favorite pastimes:

PLUGGED IN! (PI!): How and when were you first introduced to the game of Electric Football?

Don McPherson (DM): I was first introduced to the game by my older brothers when I was about five years old. They were both excellent athletes (oldest, Miles, played for the San Diego Chargers and Mark was a top five ranked middleweight fighter). They used to keep their players in a plastic bag and go to friends' houses to play. I would go with them, pull out the quarterback and running back and play with them on the floor.

PI!: Do you remember the first game you had?

DM: Yep, it was a hand me down. The buttons were missing and there was no real way to control the on/off switch. So, sometimes the game would cut off and we'd have to shake it to make the players move. That's also just about the time we began 'the great debate' about whether or not you could actually control where the players went. I believed you could by bending the strands of plastic underneath. I understand that today, the bases are a lot better and more sophisticated and coaches can control the direction of their players.

PI!: What was it about Electric Football that you enjoyed so much?

DM: I was attracted to the game because the teams had the colors and logos of the pros. I remember the Eagles and Steelers as being my favorites back then.

PI!: With whom did you usually play the game as a youngster?

DM: Mostly I played the game by myself since I was the youngest and there usually weren't other boys around my age. That's also why I liked the game so much—because I could play offense and defense and then watch the game from both sides.

PI!: For how long as a child did you continue to play Electric Football?

DM: When I just started to get good at the game, and was able to compete

with my brothers and their friends, kids stopped playing it. I'm not sure if it was our ages or the game just became less popular—but I do remember that I was on the verge of being the neighborhood champ! I used to try to get kids to play with me, but they were either into "real" football or had started to play hand held video football or basketball games.

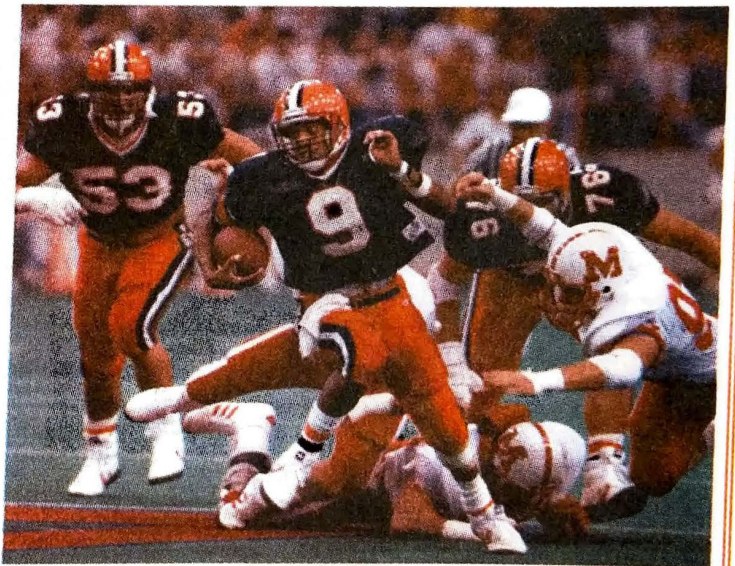
PI!: You were a High School and College All-American Quarterback, and a successful pro QB—were there any aspects of Electric Football you took with you as you got older?

DM: Absolutely. I still have anxiety when I see a player in an NFL game break into the open field. You could often depend on an EF open field run to go bad and have the player turn the wrong way (like Jim Marshall of the Vikings did in a real NFL game). The other thing I learned and brought with me to the 'real' game was how important positioning is prior to the snap of the ball. If you have the right play called and are in position, every play is designed to go all the way.

PI!: Finally, how do you think Electric Football fits into our family lifestyles today?

DM: I think EF is a perfect game for kids today. It's a very cool game that shouldn't be forgotten, not just because I played football, but because it was the last of those games that required imagination and where players were equal. All powers and abilities came from the magic of electric vibrations. It's a great alternative to today's video games as it requires strategy and patience—and forces kids to communicate and play face to face.

PI!: Thanks, Don, we couldn't have said it better ourselves! ■



Don McPherson's 2,341 passing yards in his senior year, including 22 TDs (which established a school record since tied by Donovan McNabb), helped guide the Orangemen to an 11-0-1 record in 1987, culminating in a 16-16 tie with Auburn in the Sugar Bowl.

WATT'S CURRENT AT MIGGLE

We are thrilled to announce that several more new Miggle accessories have arrived at our warehouse and are available now! Here's some advance information:

Our **ProLine Deluxe Accessory Pack** contains two magnetized goal posts with realistic magnetized 10 yard chain and down marker for \$10.00.

We are now offering extra **Race Cars with Bases** in two styles (6 per pack) for our #8502 Speedway Electric Auto Racing Game for \$10.00.

In addition, we have extra **Horses with Jockeys and Bases** (6 per pack) for our #8503 battery-operated Sweepstakes Derby Horse Racing game, also for \$10.00. ■



OUR FAVORITE ELECTRIC FOOTBALL. *Memories!*

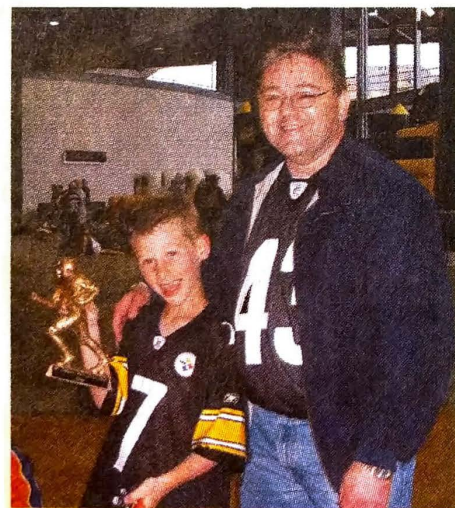
Whether it was the first board you got as a kid, the initial Miggle Convention you attended, your greatest league victory or just finding out as an adult that thousands of people around the country still played *your* favorite tabletop sports game, everyone seems to have a much loved Electric Football Memory. Here are some of the latest ones we have received from coaches all over the country:



FROM MATTHEW GERSTL PITTSBURGH, PA

My name is Matthew Gerstl and I am seven years old. I love the Pittsburgh Steelers. My mom and dad took me to the Steelers Fan Blitz at Heinz Stadium this year. I went with my buddies, Shane and Steve. My friend Rob (Delmasse) showed me how to play Electric Football, and I won the 2005 Electric Football Challenge. IT WAS THE BEST DAY OF MY LIFE! I was the Pittsburgh Steelers and Rob was the Carolina Panthers. I scored a touchdown and the bad guys scored a big fat zero!

I won a big trophy that looks like the Heisman trophy. I hope Rob will come to my house for my 8th birthday party. We can play Electric Football and trade football cards. My mom says he is very busy, but we will have lots of ice cream and cake.

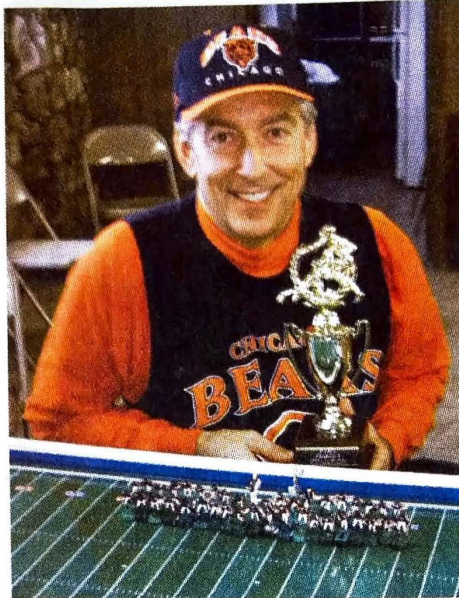


Matthew Gerstl (left) shows off his winner's trophy at the '05 Steelers Fan Blitz as his 'mentor,' Rob Delmasse, proudly looks on.

FROM JIM 'PAPA BEAR' JAVORE BRONX, NY



As an introduction to my favorite EF memory, I remember that one of my brothers and I were given a Gotham Electric Football Game in Chicago in 1958, and we got a Tudor 620 in



Coach Jim 'Papa Bear' Javore tries to prove that it is still possible for the Chicago Bears to win a championship.

1963 and many more games since then. My brothers and I had our own league and played regularly.

I moved to New York in 1973, and since then had only been able to play when I returned to the Midwest for the holidays or vacation. I was depressed when Tudor went out of business, and thought the game was facing extinction. Then I learned EF had been saved! Miggle to the rescue!

Fast-forward to 2003, when I attended the Miggle Convention/EFL Super Bowl in South Bend, IN. There I met the Landsmans, many great coaches and Ira Silverman, who informed me there was a NY EFL forming. I contacted Joe Rivera, the League Commissioner, and joined the league. I made new friends immediately, finding so much love for the game in common. That first season I finished with a 6-5 record; but last season I went 10-1 in my division and defeated Season I champ, John Wharton's Rams 25-15, for the championship.



FROM MEMBERS OF THE HAWAII ELECTRIC FOOTBALL LEAGUE

(Most of whom are U.S. military personnel temporarily stationed in our 50th State)

ANTHONY STEVENS (ALABAMA CRIMSON TIDE)

My Greatest moment was being selected as the Commissioner of the HEFL and then starting the first Electric League in the Aloha State. This league put my 'Bama Boys' on the map.

MARCO LESLIE (DOLPHINS)

My Greatest moment was my Dolphins returning an HEFL record five kickoffs for touchdowns against the Saints; No. 2 was recovering five onside kicks against the Seahawks.

THOMAS DUVAL (BROWNS)

My Greatest moment was undoubtedly the Saints pulling off the greatest upset ever to beat the undefeated Ravens in the first HEFL Championship Game. What was viewed by many as an automatic victory by the unstoppable Ravens turned into a hard fought battle that went down to the wire.

ROBERT MCCASKELL (SAINTS)

My Greatest moment was the desperation bomb I threw to Joe Horn as time expired during the first HEFL season, giving my Saints the title over the previously unbeaten Ravens. The pre-game interview with T-Sports News—which featured my prediction of a hard fought, but very close, victory for the Saints (with a little trash talk)—made the win even more complete.

RODNEY TAYLOR (RAVENS)

My greatest moment would have to be the support of the guys putting our League together and having the time to enjoy it and re-live a childhood dream. Win, lose or draw, we all have fun. Though we have moved on to different duty stations to continue our military obligations, I hope we all can get together in the future and do it all over again. MAHALO. ■



From L to R, members of the HEFL include Robert McCaskell (Saints), Rodney Taylor (Ravens), Thomas Duval (Browns), Arthur Jepsky (Seahawks), Marco Leslie (Dolphins) and Anthony Stevens (Alabama Crimson Tide).



HUGE KUDOS FOR BIG 620 EF BOARDS

Now that the retro #620 Electric Football playing field has been available for almost a year, PLUGGED IN! decided to conduct an informal survey of a few coaches who have purchased this board to see how they are enjoying their playing experience on it. Here are their comments:

"It's a real good board, and I really enjoy playing on it. The graphics are great, and I'm glad Miggle decided to re-do the 620. Also, the adjusting rods underneath are very good." —**Tracy McFaddin of Knoxville, TN** (tmcfaddin@tds.net)

"I love the new 620 board. I use it to play college football games. Its classic look reminds me of the 1960s Tudor Sports Classic, Tudor's

first big board, which was also my first electric football game." —**Mark Newell of Mobile, AL** (markanewell@bellsouth.net)

"It looks great and is the exact same dimensions as the original 620's. The graphics are beautiful, outfitted with a new on/off switch and the goal posts are easier to use. It just feels right; the metal board is not flimsy like the old boards. Miggle gives you a nice supply of bases, and the two free teams is a great bonus. Miggle has done wonders and has taken the game to new places. They are doing a GREAT JOB and they listen to their fan base." —**Frank Sales of West Babylon, NY** (mac22ny@aol.com)

"The biggest thing I liked about the new board is the appearance. The grassy-looking field and the inside of it was really cool looking, especially with the additions of the chains and the magnetic goal posts...Overall, the cosmetics were by far the best part." —**Ron Halcomb of Houston, TX** (713-625-5608)

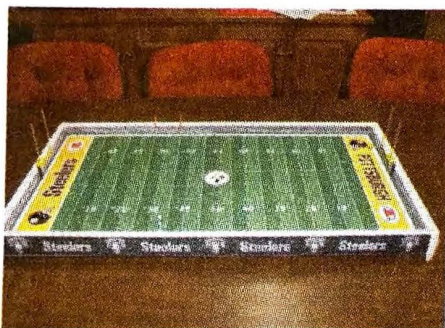
"Electric Football gives our kids something to play that I played as a kid. The classic aspects of the game are what my kids and I really appreciate—and they also love it because it is so much fun. In terms of the new board, the kids really enjoy it, especially because the players move in a much truer way." —**Gene Lanza Jr. of Cross River, NY** (Galanza@aol.com) ■

MIGGLE BOARDS GET PROFESSIONAL ALTERATIONS

EFL coach and product designer-extraordinaire **Mark Kistner** of Bloomington, IL, has been at it again. And all Electric Football fans around the country are the beneficiaries of his handiwork, creativity and love for the game.

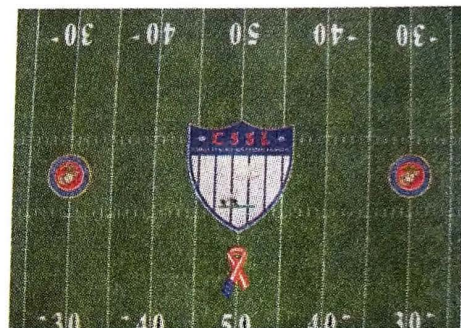
The photo of the Pittsburgh Steelers board on the left depicts an example of a total 620 makeover by Kistner. The board was fitted with a Steelers field cover, while the *outside siderails* were covered with proprietary artwork to complete the look. In addition, the *inside rails* were covered with PVC brick, thus transforming the board from a basic 620 to a true home field. The lucky recipient—Tim Smith of Florida.

The photo to the right is an example of some custom artwork Kistner did for his friend and fellow ex-marine, Chris Stacey of Hampton, VA.



#620 Board gets a Kistner 'JOLT'

Miggle will offer custom *outside Siderail* Team Logos for existing 620 boards beginning November 1. (See page 12.)



A Miggle/Kistner Field Cover Extraordinaire

Mark Kistner can be reached by phoning 309-662-3395 x209 or by e-mailing him at MarkIL43@aol.com. ■

HOT WIFES!

Hurricane Report

Ron Bell of New Orleans, a three-time Miggle EFL Super Bowl champion, spoke with Ira Silverman of PLUGGED IN! two weeks after he, his wife Tessie and their three children barely evacuated from New Orleans on the Sunday of the storm.

The news was not good. In fact, it was horrible. Ron and his family lost everything they had, from their home, to their possessions and even to Ron's place of business. When Ron talked with Ira, he and Tessie and the kids had temporarily relocated to a house in Baton Rouge, LA, which actually had space for them to spread out. "We can't plan a month or a week or even a day in advance," Ron admitted. "All we can do is think

10 minutes at a time. Things are just *that* bad."

Except for a few days' clothing they took with them, the Bells lost *everything* they had to the wrath of Katrina, and must now start over—and that includes Ron's vast collection of Electric Football games and accessories.

"I would just like to thank everyone who has tried to contact us and wish us well," Ron noted. "Thankfully, we are all safe and beginning to start to put the pieces together again."

Mark Newell of Mobile, AL, a long-time EFL coach, sent this commentary to PLUGGED IN! in early September: "We consider ourselves very fortunate here in Mobile. To the west, a million people have been ordered evacuated, and some Mississippi towns like Waveland and Kiln (Brett

Favre's hometown) have no livable structures.

"We knew early on that the storm would strike to the west of us, so we really weren't that concerned with evacuating. What we didn't appreciate was the size of this storm; as it turned out that not only did it flood New Orleans, but all coastal areas around Mobile.

"At my house, the windstorm damage was severe. We had a giant 100-year-old oak go through the middle of our house, slicing a water main, which started flooding. I had to go out to the street in 120 mph winds to cut off the water. Trees were snapping and debris was flying. The tree missed my son by about five feet. EFL collectors will be glad to hear that it missed my Electric Football room by about 10 yards.

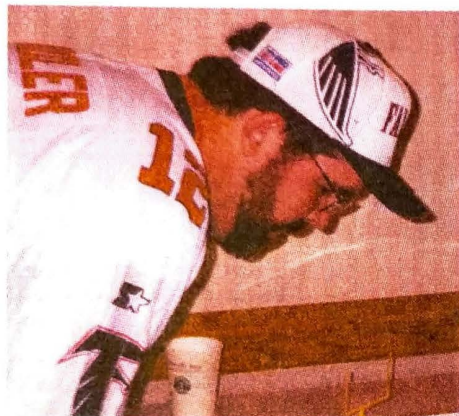
continued on page 7

PLAYING TIPS FROM THE CHAMPS

In our long tradition of providing our readers with timely and informative stories, we are delighted to present these two EF Playing Tips from a pair of very accomplished and well-known coaches. **PLUGGED IN!** welcomes your comments and suggestions regarding this article.

Passing by Coach Steve Graham

While we all would like to be a Peyton Manning or a Daunte Culpepper in Electric Football, we know that to make pass plays work in EF, there are a lot of key figures on the field that have to be "coached" just right.



Coach Steve Graham

First, you have to have a good offensive line—that's a must. Most coaches use the TTC bases on their offensive lines for strength.

Then we look at the quarterback. You have to decide if you want him stationary or if you want him to roll out. Most of these options can be achieved by using a TTC base.

When it comes to receivers and backs, you need to look for speed and accuracy. So you should use the rookie bases for these guys. You may have to go through several bases to find the one base suited for the back or receiver. Also remember, you don't need every back and receiver to go the length of the field. What you really want is a couple of good receivers or backs that can go 10 to 30 yards down the field.

In preparing your receivers, you want to have a couple programmed to go left, a couple to go right and a couple to go straight. The best strategy when you find a base you like is to run a figure 10 times from both sides of the board. If he runs the same pattern at least 8 out of 10 times, you have a back or receiver who is ready for action.

When you are set (remember: you *must* have seven guys on the line of scrimmage at all times) and the board is turned on, you want to look for your receivers and backs to break open so you have a passing lane.

If you are throwing with a TTC quarterback, you want to place the ball on the QB at a 45-degree angle. One thing that will help all new passers is to continuously practice throwing with your QB.

To practice your passing, start out with a 10-yard pass and work your way up to greater distances so you can nail a receiver anywhere on the field. Also, practice making passes with defensive players around the receivers, which will help you when game time arrives and the pressure is on you and the pass counts.

Good luck with those passes!!!

Coach Steve Graham from Lincoln, AL, can be reached via e-mail him at Sdg1964@aol.com.

Running Strategy by Coach Norbert Revels

If you want to excel on defense, then you always have to expect the unexpected. Conversely, in order to be successful in running the football, it is extremely important to keep the defense off guard.



Coach Norbert Revels

If you run your best play over and over, the defense will be on the lookout for it and it will be very difficult to execute the play in the manner you expect. That is exactly the case with my 32 counter trap play.

Also, for your running game to be successful, it is very important to establish a solid passing game. A good running attack works best when your opponent's timing is off. I pass 95% of the time, and I credit that percentage with making my running attack so successful.

I can only tell people so much about the play without giving away how to stop it. I only run it once or twice a game, and the trick is learning the exact time to run this play.

My perfect execution time is late in the second half, after making the defensive coach "cheat" his linebackers to my left, his right. When I am able to get the defensive coach cheating to my left, then the 32 counter trap works 99% of the time.

My success rate for the play isn't half bad, considering it was only stopped once in two years!

However, my play would never be so successful if I did not properly set up the trap early in the

continued on page 7

DOG POUND GETS BUZZED AT FANFEST

Borrowing a page from the **Pittsburgh EFL's** playbook, where the league provides a showcase for Electric Football at the Steelers' Annual Draft Day Party, the Cleveland Browns Ticket Office Manager/EFL Coach **Mike Patton** kicked off a similar event at *his* team's Draft Day Party this past April.

"I was able—through the generosity of Miggle Toys and the Cleveland Browns," Coach Patton told **PLUGGED IN!**, "to set up an interactive Electric Football display at Browns Stadium for our 2005 Draft Day Party. It was our first such offering and was well received by fans and team officials alike."

Mike arranged several presentations of Browns Electric Football players from different eras at his EFL booth, along with samples denoting the history of Electric Football figures—old, new and custom-made. He also had a TV playing tapes from the most recent **Los Angeles EFL** championships, as

well as a video supplied by noted EFL Coach **Reggie Rutledge**. In the background of the exhibit, Mike set up a display depicting a Browns-Steelers clash being played in Miggle Stadium...laid out, of course, in full Cleveland Browns fashion.

According to Coach Patton, the highlight of the display was four Electric Football fields—complete with Mark Kistner-created custom field covers for both the Browns and Steelers—where fans could take a shot at returning a kick-off for a TD. At the end of the day, Mike brought back all of the "coaches" who were able to go the distance for a run-off, with the ultimate winner receiving a new Super Bowl game provided by Miggle Toys.

"Overall, it was a big success," Coach Patton reported, "as our booth attracted many, many participants, both old and young. Hopefully, this booth will continue at future Browns Draft Day

Parties, and will add yet another exciting dimension to the classic Browns-Steelers rivalry."

To contact Mike Patton, e-mail him at MPatton@clevelandbrowns.com. ■



Coach Mike Patton, an executive with the Cleveland Browns, drew large crowds of youngsters and adults to his EFL Booth at the team's 2005 Draft Day FanFest

IS THERE A SUPER BOWL RING IN YOUR FUTURE?

The stakes have officially been raised!

The final coach standing at the end of the 12th Annual Official Electric Football Super Bowl next January will walk away from the concluding game not only with the prestigious Miggle Trophy — but with a very special new prize, as well.

Michael and Delayne Landsman, owners of Miggle Toys, sponsors of the annual EFL Convention, are proud to announce that the winner of the 2006 EFL Super Bowl (and all future Miggle Super Bowls) will now be presented with a Miggle EFL Super Bowl Champions Ring, specially-created by Jostens, Inc., who design and manufacture the “Rings of Champions,” in addition to the prestigious Miggle Trophy.

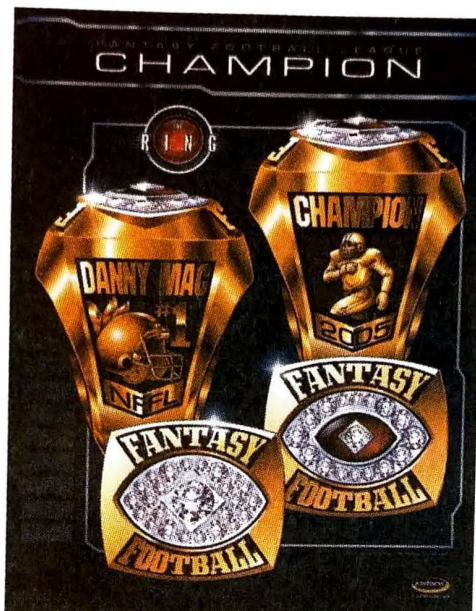
“Our ring will be a one-of-a-kind prize that every coach will want to win and wear with pride,” noted Delayne Landsman, who was instrumental in the development of this project. “The ring will be elegant and tasteful, and truly represent our pastime in a very significant way.”

In singling out Jostens to be their partners in this venture, the Landsmans selected a 108-year-old company whose legendary Championship Rings are worn by the greatest athletes in the world, including four decades of Super Bowl Champions, College Football’s BCS National Champions, the NBA’s elite—including Michael Jordan and his six titles—and high school champions in nearly every sport.

Miggle Toys has even worked out a strategic alliance with Jostens that will benefit every EF league around the country. That is, in addition to

designing and producing the new Miggle EFL Super Bowl Champions Ring, Jostens also will provide all EFLs interested in their own special League Champions Ring with a creative representative and a special Electric Football price.

It looks like in addition to a *buzz* at the 2006 Convention this coming January—you can also expect to see *sparks* fly as EFL coaches fight it out to win The Ring! ■



Jostens and Miggle are co-designing a unique EFL Super Bowl Champion's Ring that will out-shine these samples and all others!

TGI-F - IT'S ELECTRIC FOOTBALL!

Question: What is the latest mainstream company to include the classic game of Electric Football in one of its national TV commercials?

If you answered the **TGI Fridays restaurant chain**, score six points for yourself!

Launched in spring 2005, the ad is set in one of the company's popular establishments and shows a wide variety of fun, interactive items on display that can serve as conversation starters between guests and servers. In addition to the Miggle NFL Super Bowl EF game, the backdrop in the commercial is also adorned with such other nostalgic and entertaining items as toy cars, photos, guitars, keyboards, signs and license plates.

According to a spokesperson with Deutsch, Inc., the advertising agency responsible for creating the campaign, the ad was fashioned to portray T.G.I. Friday's unique dining experience regardless of where in the country you are. The commercial, she told **PLUGGED IN!**, is about “letting your hair down and having a good time.”

Thus, by trying to create a “buzz” for the T.G.I. Friday's restaurants, Deutsch utilized America's all-time No. 1 tabletop football game and notable “buzz” sound-maker as the centerpiece of their 30-second spot.

“We are obviously delighted,” stated **Michael Landsman**, president of Miggle Toys, the exclusive manufacturer and marketer of official Electric Football games and accessories, “that a company known for its family atmosphere and values, as well as its high quality food and service, would use one of our Electric Football boards to help deliver their message of fun, interaction and communications.”

At press time, Miggle Toys, Deutsch and the T.G.I. Friday's organization were in talks to try to arrange for EF leagues around the country to put on clinics and tournaments for restaurant guests and staff on premises during the current football season. Check the www.miggle.com website for further information. ■



HOT WIRES!

Continued from page 5

“I'd like to thank everyone who has expressed concern and offered prayers for the folks in our area who were hardest hit.”

Miggle Toys invites anyone else who was affected by Hurricanes Katrina and Rita to contact us so we can share your stories with other coaches around the country and throughout the world. You can send them to info@miggle.com.

Coaches Looking To Join Leagues

The following coaches who are interested in joining an EFL near their homes have been in touch with **PLUGGED IN!** and have asked us to list their names, hometowns and contact information:

John Allen of San Francisco Bay, CA, (650) 349-0792 & johnjohn700@yahoo.com

Courtney Cox of Charleston, SC, (843) 557-4052 & osjuan0204@yahoo.com

Roderick Howard of Fairview Heights, IL, MrFroggy45@aol.com

Charles Taylor of San Francisco, CA, (650) 270-4673 & cijt4@sbcglobal.net

Leagues Seeking New Coaches

Representatives from the following EFLs around the U.S. have contacted us to say they have openings for coaches at the present time. How to reach each EFL is included:

Southern Florida EFL of Champions:

Contact: **Jamal X. Lockhart** of Miami, FL, (305) 249-8777 & lockhartjamal@yahoo.com

Garden State EFL (NJ): Contacts: **Cliff**

Rollins and **Jim Rice** of Wharton, NJ, (973) 876-1789 & whartonbaberuth42@hotmail.com

Mile High Electric Football League (Denver, CO): Contact: **Randy Williams** of Denver, CO, (303) 371-9503 & rtrannyman@aol.com

Ohio Valley Electric Football League:

Contact: **The Phantom** of Ohio Valley, OH, The_Phantom@OhioValleyEFL.com

*All coaches and leagues are encouraged to let **PLUGGED IN!** know your status by sending an e-mail to smmgsports@aol.com. ■*

PLAYING TIPS FROM THE CHAMPS

game. To start the game, I will usually run plays to my left that consist of short passes to my backs in the flat and I-formation tailback off tackle rushes. They rarely fail! In the beginning of the second half, the opposing coach will start to cheat their linebackers and safeties to their right. Once that happens, **GAME OVER!**

Coach Revels from Hamtramick, MI, can be reached via e-mail at explosivechiefs@yahoo.com.

Hope these tips help your game! If you have a tip to share, please contact us at info@miggle.com. ■

DRIVING DISTANCES TO EMBASSY SUITES - BALTIMORE NORTH

213 International Circle
Hunt Valley, MD 21030
Phone: 410-584-1400 • Fax: 410-584-7306

City of Origination	Miles	City of Origination	Miles
Akron, OH	364	Memphis, TN	919
Ann Arbor, MI	539	Milwaukee, WI	805
Atlanta, GA	705	Minneapolis, MN	1121
Baton Rouge, LA	1187	Nashville, TN	707
Charlotte, NC	466	New York, NY	195
Cincinnati, OH	525	Omaha, NE	1166
Cleveland, OH	385	Philadelphia, PA	105
Columbus, OH	427	Pittsburgh, PA	258
Denver, CO	1686	Raleigh, NC	344
Des Moines, IA	1031	Roanoke, VA	282
Detroit, MI	538	South Bend, IN	624
Ft. Wayne, IN	599	Springfield, IL	813
Houston, TX	1453	St. Louis, MO	844
Indianapolis, IN	602	Toledo, OH	484
Jacksonville, FL	775	Topeka, KS	1146
Kansas City, MO	1084	Washington, DC	62
Louisville, KY	617		

2006 EFL CONVENTION FRIDAY NIGHT DINNER RESERVATION FORM

(PLEASE PRINT)

Due to the great popularity and increased turnout at the annual Miggle-hosted *Welcome Reception & Dinner* at the Official Electric Football Super Bowl & Convention, it is necessary to provide the Embassy Suites hotel with a projected attendance number significantly in advance of the function, scheduled for Friday evening, January 27, 2006. *To guarantee yourself entry to this FREE event, please complete this form, detach and MAIL or FAX before Jan. 20, 2006, to:*

2006 EFL Convention
c/o Silverman Media&Marketing Group
100 Crossways Park West, Suite 111, Woodbury, NY 11797
Or Fax To: 516/495-5281

NAME _____
STREET ADDRESS _____
CITY, STATE, ZIP CODE _____
PHONE NUMBER _____
HOW MANY GUESTS WILL BE IN YOUR PARTY? _____
HOW MANY ADULTS? _____
HOW MANY CHILDREN UNDER AGE 12? _____

2006 CONVENTION EXHIBITOR APPLICATION FORM

(PLEASE PRINT)

If you are interested in having a free display area at the 12th Annual Official Electric Football Super Bowl & Convention at the Embassy Suites Baltimore North Hotel from January 27-29, 2006, please complete this form, detach and either mail or fax by **January 23, 2006**, to:

2006 EFL Convention
c/o Silverman Media&Marketing Group
100 Crossways Park West, Suite 111, Woodbury, NY 11797
Or Fax To: 516/495-5281

NAME _____
STREET ADDRESS _____
CITY, STATE, ZIP CODE _____
DAYTIME PHONE _____
EVENING PHONE _____
E-MAIL _____
WHAT WILL YOU BE EXHIBITING _____
HOW MANY TABLES WOULD YOU LIKE, IF AVAILABLE?
(CIRCLE ONE) 1 2
WILL YOU NEED AN ELECTRICAL OUTLET? (CHECK ONE)
YES _____ NO _____

2005-2006 LEAGUE CHAMPIONS PLAY-OFF RESERVATION FORM

(PLEASE PRINT)

If eight or fewer League Champions reserve spaces in the 2006 Super Bowl tournament, they will be strategically placed among the eight Super Bowl Divisions so that they do not face each other until the Playoffs.
Please mail this form to: Silverman Media&Marketing Group, 100 Crossways Park West, Suite 111, Woodbury, NY 11797 or fax to 516/495-5281
DEADLINE: Monday, January 23, 2006

LEAGUE NAME _____
LEAGUE CONTACT NAME _____
LEAGUE CONTACT'S PHONE NO _____
LEAGUE CONTACT'S E-MAIL ADDRESS _____
NO. OF COACHES IN LEAGUE _____
NAME OF LEAGUE CHAMPION COACH OR REPRESENTATIVE _____
PHONE NO. OF LEAGUE CHAMPION OR REPRESENTATIVE _____
E-MAIL ADDRESS OF LEAGUE CHAMPION OR REP. _____
Any questions should be directed to smmgsports@aol.com

2006 SUPER BOWL & CONVENTION PRELIMINARY SCHEDULE

ALL EVENTS AT EMBASSY SUITES—BALTIMORE NORTH HOTEL

Friday, January 27, 2006

2-6 p.m. Exhibitor move in
4 p.m. Check-In at Embassy Suites starts
7-9 p.m. Welcome Reception & Dinner, hosted by Miggle Toys
Announcement of "Player of the Year" & "Breakthrough Coach of the Year" Award Recipients
8-9 p.m. Sign up for Super Bowl Tournament
9:30 p.m.-2 a.m. Practice & Scrimmaging

Saturday, January 28, 2006

8-8:45 a.m. Final Sign-Up For Super Bowl Tournament & Exhibitor Move In

8:45 a.m. Convention Opens
9 a.m.-5 p.m. Round-Robin play in Dirk Thomas and Kurt Smeby Conference Divisions
10 a.m.-1:30 p.m. Planned programs & activities for Children
2-6 p.m. Spark Bowl For Kids – Preliminaries & Semifinals
Clinics on Playing Techniques & Strategies, Painting of Figures, Setting Up Leagues & More for Adults & Youth
4:30-5:45 p.m. Adult Tournament Division Playoffs
6 p.m. Convention Closes for the day
8 p.m.- 2 a.m. Practice & Scrimmaging

Sunday, January 29, 2006

"Championship Sunday"

9 a.m. Convention Opens
9 a.m.-Noon Clinics on Playing Techniques & Strategies, Painting of Figures, Setting Up Leagues & More for Adults & Youth
9:15 a.m. Jr. & Sr. Spark Bowl Championship Games
10 a.m. Dirk Thomas Conference Championship Game
11:15 a.m. Kurt Smeby Conference Championship Game
12:45 p.m. Pre Super Bowl Activities
1 p.m. Super Bowl of Electric Football 12 at Miggle Field
3 p.m. Convention Closes

Free raffle drawings will be held throughout the weekend.

7 TOP FAMILY ACTIVITIES TO DO AROUND BALTIMORE



Baltimore's Inner Harbor offers world-class attractions, activities, restaurants and shopping for the entire family

Baltimore Inner Harbor

101 W Fayette Street, Baltimore
(410) 752-4889
One of America's oldest, but most modern, seaports features world-class restaurants, shopping and sightseeing destinations.

National Aquarium in Baltimore

501 East Pratt Street, Baltimore
(410) 576-3800
Features stunning exhibits and more than 11,000 aquatic animals.

Fort McHenry National Monument and Historic Shrine

2400 East Fort Avenue, Baltimore
(410) 962-4290
The venue's Junior Ranger program is provided for families with young visitors (ages 8-14) who are exploring the site that inspired Francis Scott Key to write "The Star-Spangled Banner." The whole family should begin their tour of this historic site by watching the film, "The Defense of Fort McHenry," at the Visitor Center.

Port Discovery, the Children's Museum In Baltimore

35 Market Place, Baltimore
(410) 727-8120
Voted one of the Top Five Children's Museums in the U.S., this destination offers interactive exhibits and programs for kids ages 2-12.

Maryland Science Center

601 Light Street, Baltimore
(410) 545-5927
Located at the famed Inner Harbor, the Center offer three floors of hands-on exhibits, IMAX films, planetarium shows, kids' room, observatory, Science Store and a new café.

Passport: Voyages of Discovery

Pier IV Building 621, E. Pratt Street, Suite 110, Baltimore
(410) 468-0700
SEE, HEAR, FEEL and RIDE American history and experience the ocean in a new way in a location that combines film, motion seats and special effects.

B & O Railroad Museum

901 W Pratt Street, Baltimore
(410) 752-2490
The Museum is home to the oldest, most comprehensive collection of railroad artifacts in the Western Hemisphere, including an unparalleled group of 19th and 20th century railroad equipment.

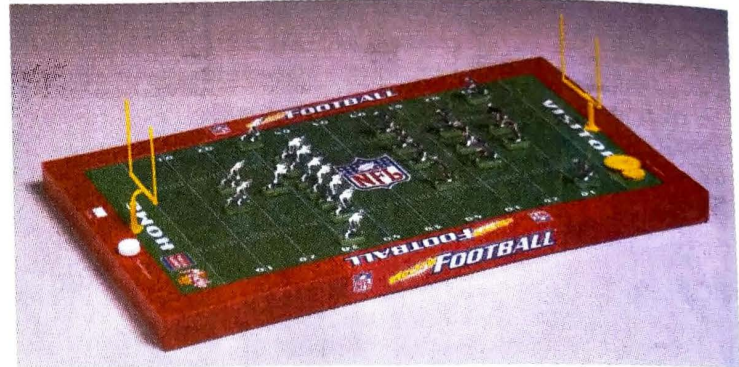
4 Exciting Games—Play Anywhere Anytime!



Power Pro Electric Football

Play real football with teams that you can paint to replicate your favorite team. Battery Operated (Portable Size: 22 3/8" x 13 3/8")

#8500



NFL Portable Electric Football

True to life real football! Teams in hand painted official NFL uniforms. Battery Operated (Portable Size: 22 3/8" x 13 3/8")

#8501



Speedway Electric Auto Racing

Cars move themselves toward the finish line on a vibrating track. Battery Operated (Portable Size: 22 3/8" x 13 3/8")

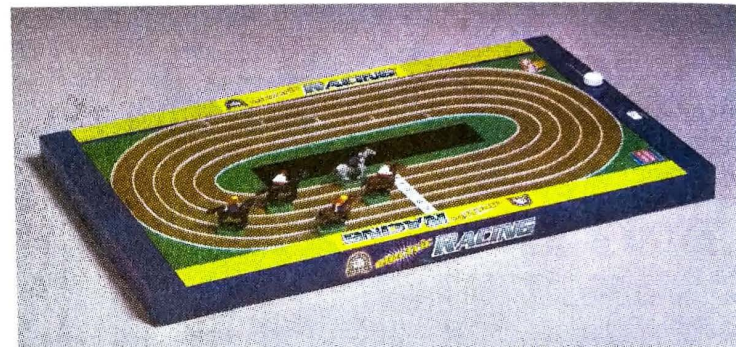
#8502

Extra Formula-type Cars (6 per pack)

#5-6021

Extra Nascar-type Cars (6 per pack)

#5-6022



Sweepstakes Derby Electric Horse Racing

Horses move on a vibrating track to the winner's circle. Battery Operated (Portable Size: 22 3/8" x 13 3/8")

#8503

Extra Horses with Jockeys (6 per pack)

#5-6025



#620

#620 Electric Football

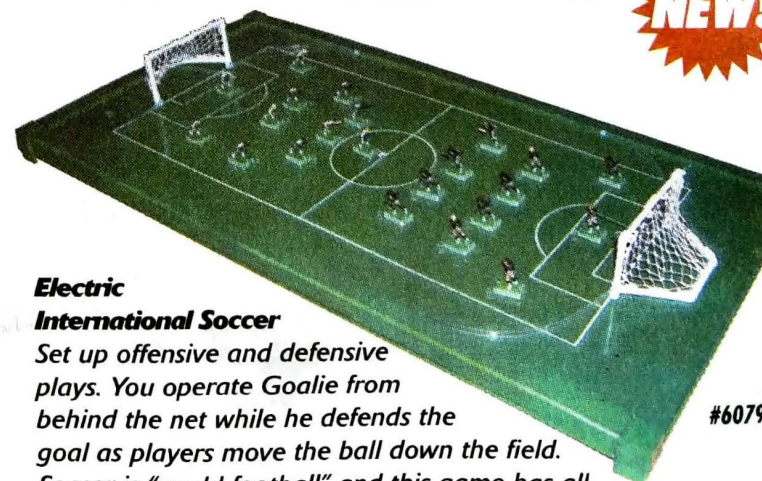
The return of a "classic" by popular request, an updated version of the old Tudor #620 Game. Special magnetized goal posts and down marker and all new 10 yard chain. Plug in Electric. (Size: 37" x 20" x 3")

ProLine Deluxe Accessory Pack

2 Magnetized Goal Posts with realistic magnetized 10 yd. Chain and 1 magnetized Down Marker. For ALL Electric Football Games.

#5-6024

Coming November 2005 – Electric International Soccer

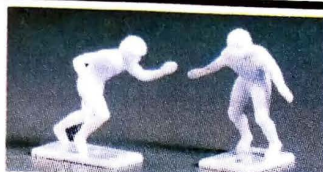


NEW!

Electric International Soccer

Set up offensive and defensive plays. You operate Goalie from behind the net while he defends the goal as players move the ball down the field. Soccer is "world football" and this game has all the thrills to make it fun and real-like. Plug in Electric. (Size: 34.7" x 18.6" x 1.8")

#6079

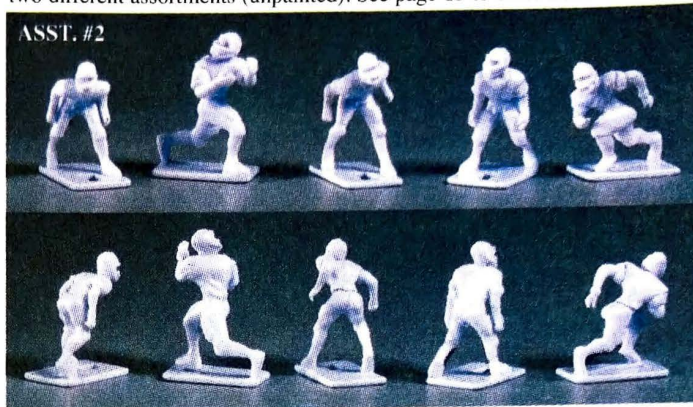


"67" BIG MEN

By popular request, we have brought back these larger, more detailed, perfectly balanced players. Sold **painted** or **unpainted**, 11 players to a pack. See price list for details.

ProLine Players – All New Poses!

Ten new custom figures to further enhance your Electric Football enjoyment and sculpted by Bill Klingbeil. These new figures are realistically looking,



great performing and at unbelievable low prices. Sold in sets of 5 figures – two different assortments (unpainted). See page 13 to order now.

KEEP SCORE! WITH THE AMAZING ELECTRONIC SCORE BOARD

From the National Anthem through the final minutes of your game, the official EFL Scoreboard keeps score with crowd cheers, animated graphics and is lots of fun to use! This Electronic Scoreboard will clip right into place and become part of your stadium.



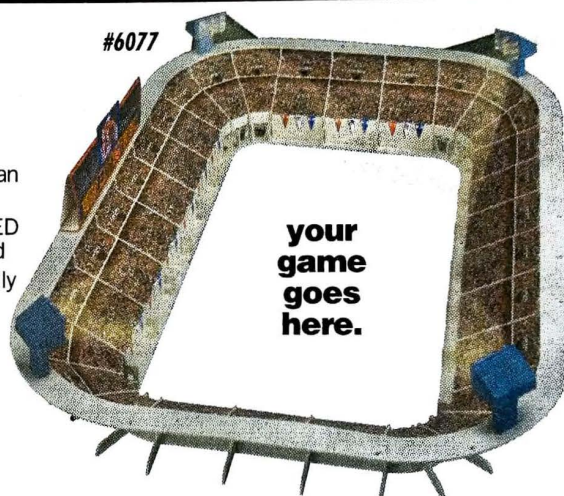
#6078

ELECTRIC FOOTBALL "SHINES BRIGHT" WITH LIGHTED STADIUM

Monday Night Football™ Lighted Stadium Accessory – So real you can almost hear the crowds!

- Play "night games" in a LIGHTED stadium with working scoreboard
- Easy to assemble—Can be easily taken apart for storage.

#6076 - ABC Monday Night Electric Football – (not shown) – Complete Game with Lighted Stadium. See order form under games and accessories.



#6077

your
game
goes
here.

DELUXE ELECTRIC FOOTBALL GAME TABLE

—COMPLETE WITH 2 NFL TEAMS AND ALL PARTS TO PLAY



#2000

This Is The Electric Football Game Table For You!

- Large 24" x 48" playing surface and 34 1/4" H
- Perfectly balanced with an all-new electrical system
- Great speed control – No dead spots
- Real solid oak wood with 2 sets of legs to stand alone or place on a table top
- An attractive game table that you will be proud to display

A great GIFT for you and your family or anyone who loves Electric Football

GAMES, SCOREBOARD AND LIGHTED STADIUM AVAILABLE AT YOUR LOCAL RETAILER, IN CATALOGS OR USE ORDER FORM TO ORDER. ALSO, ORDER ONLINE AT WWW.MIGGLE.COM.

VALUE COUPON WORTH \$50⁰⁰

Purchase this #2000 Deluxe Electric Football Game Table for only \$489.95 and deduct \$50.00 from your purchase if shipped by November 30, 2005.

(Offer ONLY good now through November 30, 2005)

**CHRISTMAS ORDERS MUST REACH US BY DEC. 9TH
TO BE GUARANTEED HOLIDAY DELIVERY**



PARTS, GAMES AND ACCESSORIES ORDER FORM

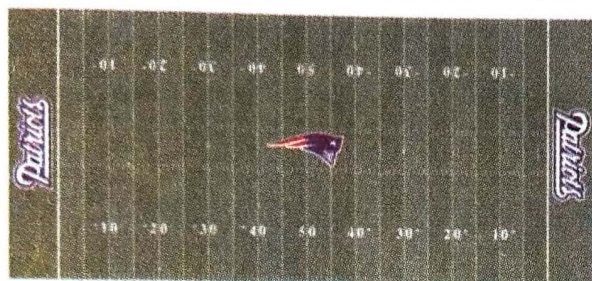
ALL PRODUCTS ALSO SHOWN IN OUR ONLINE STORE AT WWW.MIGGLE.COM

Add one of our "Kistner" Custom Field Covers to your Electric Football game and your gameboard will look like your favorite team's field—exceptional attention to detail and true NFL colors. **Available in all 32 NFL Teams and 23 College Teams.**

These Field Covers are made for the Super Bowl gameboard size and Tudor's #620 gameboard size. Special orders for ANY and ALL size playing fields for all NFL teams are available by request by calling our toll free number at (877)791-6644.

What Makes These Field Covers So Great...

- Quality film substrate – Not paper
- AccuShield coating – Not laminate
- Vector image digital graphics
- Revolutionary removable adhesive
- Can be removed and reused



NFL Field Covers



College Field Covers

NOTE:
Custom Made
to Order and
Not Returnable

NFL FIELD COVERS – SUPER BOWL SIZE (S) – TUDOR #620 SIZE (T)

ITEM	NO.	QTY.	PRICE	NO.	QTY.	PRICE
AFC						
BENGALS	FC-02-S		\$69.95	FC-02-T		\$69.95
BILLS	FC-03-S		\$69.95	FC-03-T		\$69.95
BRONCOS	FC-04-S		\$69.95	FC-04-T		\$69.95
BROWNS	FC-05-S		\$69.95	FC-05-T		\$69.95
CHARGERS	FC-08-S		\$69.95	FC-08-T		\$69.95
CHIEFS	FC-09-S		\$69.95	FC-09-T		\$69.95
COLTS	FC-10-S		\$69.95	FC-10-T		\$69.95
DOLPHINS	FC-12-S		\$69.95	FC-12-T		\$69.95
JAGUARS	FC-29-S		\$69.95	FC-29-T		\$69.95
JETS	FC-17-S		\$69.95	FC-17-T		\$69.95
PATRIOTS	FC-21-S		\$69.95	FC-21-T		\$69.95
RAIDERS	FC-22-S		\$69.95	FC-22-T		\$69.95
RAVENS	FC-31-S		\$69.95	FC-31-T		\$69.95
STEELERS	FC-27-S		\$69.95	FC-27-T		\$69.95
TEXANS	FC-33-S		\$69.95	FC-33-T		\$69.95
TITANS	FC-32-S		\$69.95	FC-32-T		\$69.95
TOTAL						

NFL FIELD COVERS

ITEM	NO.	QTY.	PRICE	NO.	QTY.	PRICE
NFC						
BEARS	FC-01-S		\$69.95	FC-01-T		\$69.95
BUCS	FC-06-S		\$69.95	FC-06-T		\$69.95
CARDINALS	FC-07-S		\$69.95	FC-07-T		\$69.95
COWBOYS	FC-11-S		\$69.95	FC-11-T		\$69.95
EAGLES	FC-13-S		\$69.95	FC-13-T		\$69.95
FALCONS	FC-14-S		\$69.95	FC-14-T		\$69.95
49 ERS	FC-15-S		\$69.95	FC-15-T		\$69.95
GIANTS	FC-16-S		\$69.95	FC-16-T		\$69.95
LIONS	FC-18-S		\$69.95	FC-18-T		\$69.95
PACKERS	FC-20-S		\$69.95	FC-20-T		\$69.95
PANTHERS	FC-30-S		\$69.95	FC-30-T		\$69.95
RAMS	FC-23-S		\$69.95	FC-23-T		\$69.95
REDSKINS	FC-24-S		\$69.95	FC-24-T		\$69.95
SAINTS	FC-25-S		\$69.95	FC-25-T		\$69.95
SEAHAWKS	FC-26-S		\$69.95	FC-26-T		\$69.95
VIKINGS	FC-28-S		\$69.95	FC-28-T		\$69.95
SUPERBOWL	SUPERB		\$69.95	SUPERB		\$69.95
TOTAL						

COLLEGE FIELD COVERS – SUPER BOWL SIZE (S) – TUDOR #620 SIZE (T)

TEAMS	NO.	QTY.	PRICE	NO.	QTY.	PRICE
ALABAMA	FC-50-S		\$69.95	FC-50-T		\$69.95
ARKANSAS	FC-51-S		\$69.95	FC-51-T		\$69.95
FLORIDA	FC-52-S		\$69.95	FC-52-T		\$69.95
FL STATE	FC-53-S		\$69.95	FC-53-T		\$69.95
GEORGIA	FC-54-S		\$69.95	FC-54-T		\$69.95
GA TECH	FC-55-S		\$69.95	FC-55-T		\$69.95
ILLINOIS	FC-56-S		\$69.95	FC-56-T		\$69.95
KS STATE	FC-57-S		\$69.95	FC-57-T		\$69.95
MIAMI	FC-58-S		\$69.95	FC-58-T		\$69.95
MICHIGAN	FC-59-S		\$69.95	FC-59-T		\$69.95
MI STATE	FC-60-S		\$69.95	FC-60-T		\$69.95
MINNESOTA	FC-61-S		\$69.95	FC-61-T		\$69.95
MISSISSIPPI	FC-62-S		\$69.95	FC-62-T		\$69.95
NEBRASKA	FC-63-S		\$69.95	FC-63-T		\$69.95
PA STATE	FC-64-S		\$69.95	FC-64-T		\$69.95
PURDUE	FC-65-S		\$69.95	FC-65-T		\$69.95
TENNESSEE	FC-66-S		\$69.95	FC-66-T		\$69.95
TEXAS	FC-67-S		\$69.95	FC-67-T		\$69.95
TX A&M	FC-68-S		\$69.95	FC-68-T		\$69.95
VA TECH	FC-69-S		\$69.95	FC-69-T		\$69.95
WISCONSIN	FC-70-S		\$69.95	FC-70-T		\$69.95
WASHINGTON	FC-71-S		\$69.95	FC-71-T		\$69.95
OKLAHOMA	FC-72-S		\$69.95	FC-72-T		\$69.95
TOTAL						

NOTE: ALL FIELD COVERS SHIPPED SEPARATELY, NOT WITH PARTS ORDER

NEW

Custom 620 Siderail Team Logos

Decorate your outside rails – see page 5

Set of 4 rails

Custom made – No returns.

NFL TEAM NAMES FOR END ZONES

NFL End Zone Team Names—Customize your gameboard to show your favorite teams with NFL logos. Available in all **32 NFL Teams** and includes team name goal post wraparounds.

NOW available in two sizes: "L" for games prior to 1997 (1 15/16" x 7 3/4") and "XL" for all other Super Bowl games (2 11/16" x 11 1/2")



CONTINUED ON NEXT PAGE

ORDER FORM CONTINUED

GAMES AND ACCESSORIES (EXPRESS CHARGES DO NOT APPLY TO THESE ITEMS)

ITEM	NO.	QTY.	PRICE
REGULAR ELECTRIC FOOTBALL (ADD \$10.00 S&H)	6071		\$49.95
SUPERBOWL ELECTRIC FOOTBALL (ADD \$10.00 S&H)	6072		\$69.95
#620 ELECTRIC FOOTBALL (ADD \$10.00 S&H)	620		\$129.95
ABC MNF GAME (ADD \$15 SHIPPING & HANDLING)	6076		\$149.95
DELUXE GAME TABLE (ADD \$30.00 SHIPPING & HANDLING)	2000		\$489.95
POWER PRO ELECTRIC FOOTBALL (ADD \$10.00 S&H)	8500		\$29.95
NFL PORTABLE ELECTRIC FOOTBALL (ADD \$10.00 S&H)	8501		\$39.95
SPEEDWAY ELECTRIC AUTO RACING (ADD \$10.00 S&H)	8502		\$29.95
TOTAL			

GAMES AND ACCESSORIES

ITEM	NO.	QTY.	PRICE
SWEEPSTAKES DERBY ELECTRIC HORSE RACING (ADD \$10.00 SHIPPING & HANDLING)	8503		\$29.95
ELECTRIC BASEBALL (ADD \$10.00 SHIPPING & HANDLING)	6074		\$49.95
ACTION BOWL (ADD \$5.50 SHIPPING & HANDLING)	6075		\$14.95
ELECTRONIC SCOREBOARD (ADD \$7.50 S&H)	6078		\$49.95
FOOTBALL STADIUM (ONLY) (ADD \$10.00 S&H)	6077		\$89.95
LARGE STORAGE/TRAVEL CARRY CASE (HOLDS 8 TEAMS)	CCL-1		\$24.99
SMALL STORAGE/TRAVEL CARRY CASE (HOLDS 2 TEAMS)	CCS-2		\$14.99
TOTAL			

UNPAINTED FIGURES - TTQB'S - BASES - MISCELLANEOUS PARTS

ITEM	NO.	QTY.	PRICE
PROLINE PLAYERS (ASST. #1 SET OF 5)	PLP-1		\$6.00
PROLINE PLAYERS (ASST. #2 SET OF 5)	PLP-2		\$6.00
"67" BIG MEN - (UNPAINTED - SET OF 11)	67-BM		\$6.00
11 WHITE FIGURES (UNPAINTED)	5-6019-W		\$4.00
11 RED FIGURES (UNPAINTED)	5-6019-R		\$4.00
TT QUARTERBACKS (2 PER PACK)	5-6005		\$3.00
BAG OF 22 CLASSIC ROOKIE BASES (SINGLE CLIP BASE)	5-6001-CL		\$10.00
BAG OF 24 ROOKIE/REG BASES	5-6001		\$5.00
BAG OF 24 TTC BASES	5-6000		\$6.00
PATRIOTIC SUPER FAST BASES, 12 TTC BASES, 12 ROOKIE BASES (MOLDED IN RED, WHITE AND BLUE COLORS)	PSFB		\$8.00
2003 PURPLE SPEED BASES	2003-CB		\$7.00
2004 POLO GREEN SPEED BASES	2004-CB		\$7.00
2005 BLACK SPEED BASES (PROLINE)	2005-CB		\$7.00
"OLD FROSTY" BASES (LIGHT GREEN)	5-OFB		\$7.00
PROLINE STRONG BASES WITH A STRAIGHT FRONT			
12 ROOKIE STYLE BASES	PL2SSFRB		\$5.00
12 TOTAL TEAM CONTROL BASES (TTC)	PL2SSFTT		\$6.00
12 SINGLE CLIP BASES	PL2SSFSC		\$7.00
PROLINE FAST BASES WITH A STRAIGHT FRONT			
12 ROOKIE STYLE BASES	PL2FSFRB		\$5.00
12 TOTAL TEAM CONTROL BASES (TTC)	PL2FSFTT		\$6.00
12 SINGLE CLIP BASES	PL2FSFSC		\$7.00
PROLINE STRONG BASES WITH A ROUNDED FRONT			
12 ROOKIE STYLE BASES	PL2SRFRB		\$5.00
12 TOTAL TEAM CONTROL BASES (TTC)	PL2SRFTT		\$6.00
12 SINGLE CLIP BASES	PL2SRFSC		\$7.00
TOTAL			

BASES/FOOTBALL MISCELLANEOUS

ITEM	NO.	QTY.	PRICE
PROLINE FAST BASES WITH A ROUNDED FRONT			
12 ROOKIE STYLE BASES	PL2FRFRB		\$5.00
12 TOTAL TEAM CONTROL BASES (TTC)	PL2FRFTT		\$6.00
12 SINGLE CLIP BASES	PL2FRFSC		\$7.00
PROLINE DELUXE ACCESSORY PACK (SEE PAGE 10)	5-6024		\$10.00
FOOTBALL ACCESSORY SPRUE	5-6014		\$6.00
10 YARD CHAIN W/BALL MARKER	5-6007		\$1.50
MARKER MAGNETS (PRICE EACH)	5-6013		\$0.50
DOWN MARKER	5-6006		\$1.50
GOAL POSTS SUPER BOWL FOOTBALL (EACH)	5-6008A		\$1.50
"MINUTE" WHEEL	5-6009		\$1.00
"SECOND" WHEEL	5-6010		\$1.00
SPEED CONTROL KNOB	5-6011		\$1.00
SCORING KNOBS - 6 PER SET	5-6012		\$1.50
SCOREBOARD CLIPS (EACH)	5-6023		\$1.50
6 FOOTBALLS - 1 TIMER WASHER (ON STRIP)	5-6016		\$1.50
PROLINE FOOTBALLS (6 PER BAG)	PLFB		\$3.00
FOOTBALL RULEBOOK	5-6017		\$1.00
SCOREBOARD PAD	5-6018		\$1.00
REPLACEMENT SCOREBOARDS	RSB-1		\$7.50
6 FORMULA-TYPE RACE CARS WITH BASES	5-6021		\$10.00
6 NASCAR-TYPE RACE CARS WITH BASES	5-6022		\$10.00
6 HORSES AND JOCKEYS WITH BASES	5-6025		\$10.00
TOTAL			

QUARTERBACK SETS

ITEM	QTY. HOME (H)	QTY. AWAY (W)	PRICE
16 AFC QUARTERBACKS (CURRENT UNIFORMS)			\$10.00/SET
16 NFC QUARTERBACKS (CURRENT UNIFORMS)			\$10.00/SET
TOTAL			

NFL QUARTERBACK SETS

ITEM	QTY.	PRICE
16 AFC QB'S MIXED (HOME AND AWAY)		\$10.00/SET
16 NFC QB'S MIXED (HOME AND AWAY)		\$10.00/SET
16 ASSORTED QUARTERBACKS (UNPAINTED)		\$7.50/SET
TOTAL		

SIDELINE ACCESSORIES

ITEM	NO.	QTY.	PRICE
OFFICIALS: UMPIRE AND 2 REFEREES	5-94-0		\$7.00
BACKFIELD COACH, LINE COACH, AND HEAD COACH	5-93-0		\$7.00
REPORTER, TEAM OWNER, AND CAMERA MAN	5-90-0		\$7.00
TOTAL			

SIDELINE FIGURES WITH MAGNETIC BASES

ITEM	NO.	QTY.	PRICE
6 CHEERLEADERS HAND PAINTED IN RED	5-92-0		\$7.00
6 CHEERLEADERS HAND PAINTED IN BLUE	5-91-0		\$7.00
TOTAL			

OUTSIDE SIDERAILS (NOT RETURNABLE)

ITEM	SPECIFY TEAM NAME HERE (PLEASE PRINT)	QTY.	PRICE
4 OUTSIDE SIDERAILS			\$40.00 (SET OF 4)
TOTAL			

CUSTOM 620 SIDERAIL TEAM LOGOS

GRAB BAG SPECIAL - "RETIRED" UNIFORMS (LIMITED QUANTITIES)

ITEM	NO.	QTY.	PRICE
12 AFC TEAMS - (OLDER TEAMS) NO PICKING - NO EXCHANGES	5-6030		\$25.00
12 NFC TEAMS - (OLDER TEAMS) NO PICKING - NO EXCHANGES	5-6031		\$25.00
TOTAL			

GRAB BAG SPECIAL

NEWSLETTER

ITEM	QTY.	PRICE
NEWSLETTER ONE YEAR (2 ISSUES) RENEW YOUR SUBSCRIPTION NOW		\$4.00
TOTAL		

NEWSLETTER

CONTINUED ON NEXT PAGE

ORDER FORM CONTINUED

NFL TEAMS

SETS OF 11 NFL TEAM PLAYERS HAND PAINTED IN OFFICIAL UNIFORMS										END ZONE TEAM NAMES						UNIFORM NUMBERS					
DARK JERSEYS					WHITE JERSEYS					SIZE L (1 ¹⁵ / ₁₆ " x 7 ¹ / ₂ ")			SIZE XL (2 ¹ / ₁₆ " x 11 ¹ / ₂ ")			FOR DARK JERSEYS			FOR WHITE JERSEYS		
AFC	NO.	QTY.	PRICE		NO.	QTY.	PRICE			NO.	QTY.	PRICE	NO.	QTY.	PRICE	NO.	QTY.	PRICE	NO.	QTY.	PRICE
BENGALS	5-02-D		\$8.00		5-02-W		\$8.00			5-02-L		\$1.00	5-02-XL		\$2.00	5-6024-W		\$1.00	5-6024-B		\$1.00
BILLS	5-03-D		\$8.00		5-03-W		\$8.00			5-03-L		\$1.00	5-03-XL		\$2.00	5-6024-W		\$1.00	5-6024-BL		\$1.00
BRONCOS	5-04-D		\$8.00		5-04-W		\$8.00			5-04-L		\$1.00	5-04-XL		\$2.00	5-6024-W		\$1.00	5-6024-BL		\$1.00
BROWNS	5-05-D		\$8.00		5-05-W		\$8.00			5-05-L		\$1.00	5-05-XL		\$2.00	5-6024-W		\$1.00	5-6024-BR		\$1.00
CHARGERS	5-08-D		\$8.00		5-08-W		\$8.00			5-08-L		\$1.00	5-08-XL		\$2.00	5-6024-W		\$1.00	5-6024-BL		\$1.00
CHIEFS	5-09-D		\$8.00		5-09-W		\$8.00			5-09-L		\$1.00	5-09-XL		\$2.00	5-6024-W		\$1.00	5-6024-R		\$1.00
COLTS	5-10-D		\$8.00		5-10-W		\$8.00			5-10-L		\$1.00	5-10-XL		\$2.00	5-6024-W		\$1.00	5-6024-BL		\$1.00
DOLPHINS	5-12-D		\$8.00		5-12-W		\$8.00			5-12-L		\$1.00	5-12-XL		\$2.00	5-6024-W		\$1.00	5-6024-A		\$1.00
JAGUARS	5-29-D		\$8.00		5-29-W		\$8.00			5-29-L		\$1.00	5-29-XL		\$2.00	5-6024-W		\$1.00	5-6024-A		\$1.00
JETS	5-17-D		\$8.00		5-17-W		\$8.00			5-17-L		\$1.00	5-17-XL		\$2.00	5-6024-W		\$1.00	5-6024-G		\$1.00
OILERS	5-19-D		\$8.00		5-19-W		\$8.00			5-19-L		\$1.00	5-19-XL		\$2.00	5-6024-W		\$1.00	5-6024-BL		\$1.00
PATRIOTS	5-21-D		\$8.00		5-21-W		\$8.00			5-21-L		\$1.00	5-21-XL		\$2.00	5-6024-S		\$1.00	5-6024-BL		\$1.00
RAIDERS	5-22-D		\$8.00		5-22-W		\$8.00			5-22-L		\$1.00	5-22-XL		\$2.00	5-6024-W		\$1.00	5-6024-B		\$1.00
RAVENS	5-31-D		\$8.00		5-31-W		\$8.00			5-31-L		\$1.00	5-31-XL		\$2.00	5-6024-W		\$1.00	5-6024-P		\$1.00
STEELERS	5-27-D		\$8.00		5-27-W		\$8.00			5-27-L		\$1.00	5-27-XL		\$2.00	5-6024-W		\$1.00	5-6024-B		\$1.00
TEXANS	5-33-D		\$8.00		5-33-W		\$8.00			5-33-L		\$1.00	5-33-XL		\$2.00	5-6024-W		\$1.00	5-6024-R		\$1.00
TITANS	5-32-D		\$8.00		5-32-W		\$8.00			5-32-L		\$1.00	5-32-XL		\$2.00	5-6024-W		\$1.00	5-6024-B		\$1.00
NFC																					
BEARS	5-01-D		\$8.00		5-01-W		\$8.00			5-01-L		\$1.00	5-01-XL		\$2.00	5-6024-W		\$1.00	5-6024-B		\$1.00
BUCS	5-06-D		\$8.00		5-06-W		\$8.00			5-06-L		\$1.00	5-06-XL		\$2.00	5-6024-W		\$1.00	5-6024-R		\$1.00
CARDINALS	5-07-D		\$8.00		5-07-W		\$8.00			5-07-L		\$1.00	5-07-XL		\$2.00	5-6024-W		\$1.00	5-6024-R		\$1.00
COWBOYS	5-11-D		\$8.00		5-11-W		\$8.00			5-11-L		\$1.00	5-11-XL		\$2.00	5-6024-S		\$1.00	5-6024-BL		\$1.00
EAGLES	5-13-D		\$8.00		5-13-W		\$8.00			5-13-L		\$1.00	5-13-XL		\$2.00	5-6024-W		\$1.00	5-6024-G		\$1.00
FALCONS	5-14-D		\$8.00		5-14-W		\$8.00			5-14-L		\$1.00	5-14-XL		\$2.00	5-6024-W		\$1.00	5-6024-B		\$1.00
49 ERS	5-15-D		\$8.00		5-15-W		\$8.00			5-15-L		\$1.00	5-15-XL		\$2.00	5-6024-W		\$1.00	5-6024-R		\$1.00
GIANTS	5-16-D		\$8.00		5-16-W		\$8.00			5-16-L		\$1.00	5-16-XL		\$2.00	5-6024-W		\$1.00	5-6024-R		\$1.00
LIONS	5-18-D		\$8.00		5-18-W		\$8.00			5-18-L		\$1.00	5-18-XL		\$2.00	5-6024-W		\$1.00	5-6024-BL		\$1.00
PACKERS	5-20-D		\$8.00		5-20-W		\$8.00			5-20-L		\$1.00	5-20-XL		\$2.00	5-6024-W		\$1.00	5-6024-G		\$1.00
PANTHERS	5-30-D		\$8.00		5-30-W		\$8.00			5-30-L		\$1.00	5-30-XL		\$2.00	5-6024-W		\$1.00	5-6024-B		\$1.00
RAMS	5-23-D		\$8.00		5-23-W		\$8.00			5-23-L		\$1.00	5-23-XL		\$2.00	5-6024-GO		\$1.00	5-6024-BL		\$1.00
REDSKINS	5-24-D		\$8.00		5-24-W		\$8.00			5-24-L		\$1.00	5-24-XL		\$2.00	5-6024-W		\$1.00	5-6024-R		\$1.00
SAINTS	5-25-D		\$8.00		5-25-W		\$8.00			5-25-L		\$1.00	5-25-XL		\$2.00	5-6024-GO		\$1.00	5-6024-GO		\$1.00
SEAHAWKS	5-26-D		\$8.00		5-26-W		\$8.00			5-26-L		\$1.00	5-26-XL		\$2.00	5-6024-W		\$1.00	5-6024-BL		\$1.00
VIKINGS	5-28-D		\$8.00		5-28-W		\$8.00			5-28-L		\$1.00	5-28-XL		\$2.00	5-6024-W		\$1.00	5-6024-P		\$1.00
TOTAL																					

NOTE: NUMBERS AND BASES NOT INCLUDED AND MUST BE ORDERED SEPARATELY.

"67" BIG MEN PAINTED TEAMS

SETS OF 11 NFL TEAM PLAYERS HAND PAINTED IN OFFICIAL UNIFORMS								END ZONE TEAM NAMES						UNIFORM NUMBERS					
DARK JERSEYS				WHITE JERSEYS				SIZE L (1 ¹⁵ / ₁₆ " x 7 ¹ / ₂ ")			SIZE XL (2 ¹ / ₁₆ " x 11 ¹ / ₂ ")			FOR DARK JERSEYS			FOR WHITE JERSEYS		
AFC	NO.	QTY.	PRICE	NO.	QTY.	PRICE	NO.	QTY.	PRICE	NO.	QTY.	PRICE	NO.	QTY.	PRICE	NO.	QTY.	PRICE	
BENGALS	67-02-D		\$10.00	67-02-W		\$10.00	5-02-L		\$1.00	5-02-XL		\$2.00	5-6024-W		\$1.00	5-6024-B		\$1.00	
BILLS	67-03-D		\$10.00	67-03-W		\$10.00	5-03-L		\$1.00	5-03-XL		\$2.00	5-6024-W		\$1.00	5-6024-BL		\$1.00	
BRONCOS	67-04-D		\$10.00	67-04-W		\$10.00	5-04-L		\$1.00	5-04-XL		\$2.00	5-6024-W		\$1.00	5-6024-BL		\$1.00	
BROWNS	67-05-D		\$10.00	67-05-W		\$10.00	5-05-L		\$1.00	5-05-XL		\$2.00	5-6024-W		\$1.00	5-6024-BR		\$1.00	
CHARGERS	67-08-D		\$10.00	67-08-W		\$10.00	5-08-L		\$1.00	5-08-XL		\$2.00	5-6024-W		\$1.00	5-6024-BL		\$1.00	
CHIEFS	67-09-D		\$10.00	67-09-W		\$10.00	5-09-L		\$1.00	5-09-XL		\$2.00	5-6024-W		\$1.00	5-6024-R		\$1.00	
COLTS	67-10-D		\$10.00	67-10-W		\$10.00	5-10-L		\$1.00	5-10-XL		\$2.00	5-6024-W		\$1.00	5-6024-BL		\$1.00	
DOLPHINS	67-12-D		\$10.00	67-12-W		\$10.00	5-12-L		\$1.00	5-12-XL		\$2.00	5-6024-W		\$1.00	5-6024-A		\$1.00	
JAGUARS	67-29-D		\$10.00	67-29-W		\$10.00	5-29-L		\$1.00	5-29-XL		\$2.00	5-6024-W		\$1.00	5-6024-A		\$1.00	
JETS	67-17-D		\$10.00	67-17-W		\$10.00	5-17-L		\$1.00	5-17-XL		\$2.00	5-6024-W		\$1.00	5-6024-G		\$1.00	
OILERS	67-19-D		\$10.00	67-19-W		\$10.00	5-19-L		\$1.00	5-19-XL		\$2.00	5-6024-W		\$1.00	5-6024-BL		\$1.00	
PATRIOTS	67-21-D		\$10.00	67-21-W		\$10.00	5-21-L		\$1.00	5-21-XL		\$2.00	5-6024-S		\$1.00	5-6024-BL		\$1.00	
RAIDERS	67-22-D		\$10.00	67-22-W		\$10.00	5-22-L		\$1.00	5-22-XL		\$2.00	5-6024-W		\$1.00	5-6024-B		\$1.00	
RAVENS	67-31-D		\$10.00	67-31-W		\$10.00	5-31-L		\$1.00	5-31-XL		\$2.00	5-6024-W		\$1.00	5-6024-P		\$1.00	
STEELERS	67-27-D		\$10.00	67-27-W		\$10.00	5-27-L		\$1.00	5-27-XL		\$2.00	5-6024-W		\$1.00	5-6024-B		\$1.00	
TEXANS	67-33-D		\$10.00	67-33-W		\$10.00	5-33-L		\$1.00	5-33-XL		\$2.00	5-6024-W		\$1.00	5-6024-R		\$1.00	
TITANS	67-32-D		\$10.00	67-32-W		\$10.00	5-32-L		\$1.00	5-32-XL		\$2.00	5-6024-W		\$1.00	5-6024-B		\$1.00	
NFC																			
BEARS	67-01-D		\$10.00	67-01-W		\$10.00	5-01-L		\$1.00	5-01-XL		\$2.00	5-6024-W		\$1.00	5-6024-B		\$1.00	
BUCS	67-06-D		\$10.00	67-06-W		\$10.00	5-06-L		\$1.00	5-06-XL		\$2.00	5-6024-W		\$1.00	5-6024-R		\$1.00	
CARDINALS	67-07-D		\$10.00	67-07-W		\$10.00	5-07-L		\$1.00	5-07-XL		\$2.00	5-6024-W		\$1.00	5-6024-R		\$1.00	
COWBOYS	67-11-D		\$10.00	67-11-W		\$10.00	5-11-L		\$1.00	5-11-XL		\$2.00	5-6024-S		\$1.00	5-6024-BL		\$1.00	
EAGLES	67-13-D		\$10.00	67-13-W		\$10.00	5-13-L		\$1.00	5-13-XL		\$2.00	5-6024-W		\$1.00	5-6024-G		\$1.00	
FALCONS	67-14-D		\$10.00	67-14-W		\$10.00	5-14-L		\$1.00	5-14-XL		\$2.00	5-6024-W		\$1.00	5-6024-B		\$1.00	
49 ERS	67-15-D		\$10.00	67-15-W		\$10.00	5-15-L		\$1.00	5-15-XL		\$2.00	5-6024-W		\$1.00	5-6024-R		\$1.00	
GIANTS	67-16-D		\$10.00	67-16-W		\$10.00	5-16-L		\$1.00	5-16-XL		\$2.00	5-6024-W		\$1.00	5-6024-R		\$1.00	
LIONS	67-18-D		\$10.00	67-18-W		\$10.00	5-18-L		\$1.00	5-18-XL		\$2.00	5-6024-W		\$1.00	5-6024-BL		\$1.00	
PACKERS	67-20-D		\$10.00	67-20-W		\$10.00	5-20-L		\$1.00	5-20-XL		\$2.00	5-6024-W		\$1.00	5-6024-G		\$1.00	
PANTHERS	67-30-D		\$10.00	67-30-W		\$10.00	5-30-L		\$1.00	5-30-XL		\$2.00	5-6024-W		\$1.00	5-6024-B		\$1.00	
RAMS	67-23-D		\$10.00	67-23-W		\$10.00	5-23-L		\$1.00	5-23-XL		\$2.00	5-6024-GO		\$1.00	5-6024-BL		\$1.00	
REDSKINS	67-24-D		\$10.00	67-24-W		\$10.00	5-24-L		\$1.00	5-24-XL		\$2.00	5-6024-W		\$1.00	5-6024-R		\$1.00	
SAINTS	67-25-D		\$10.00	67-25-W		\$10.00	5-25-L		\$1.00	5-25-XL		\$2.00	5-6024-GO		\$1.00	5-6024-GO		\$1.00	
SEAHAWKS	67-26-D		\$10.00	67-26-W		\$10.00	5-26-L		\$1.00	5-26-XL		\$2.00	5-6024-W		\$1.00	5-6024-BL		\$1.00	
VIKINGS	67-28-D		\$10.00	67-28-W		\$10.00	5-28-L		\$1.00	5-28-XL		\$2.00	5-6024-W		\$1.00	5-6024-P		\$1.00	
TOTAL																			

CHRISTMAS ORDERS MUST REACH US BY DEC. 9TH TO BE GUARANTEED HOLIDAY DELIVERY

ORDER FORM CONTINUED

NFL DIVISIONAL TEAM PACKAGES



AFC North
Cleveland
Pittsburgh
Baltimore
Cincinnati

NFC North
Chicago
Green Bay
Minnesota
Detroit

AFC South
Houston
Tennessee
Indianapolis
Jacksonville

NFC South
New Orleans
Carolina
Tampa Bay
Atlanta

AFC East
New England
Miami
NY Jets
Buffalo

NFC East
Washington
Philadelphia
Dallas
NY Giants

AFC West
San Diego
Oakland
Denver
Kansas City

NFC West
San Francisco
Arizona
Seattle
St. Louis

NOW YOU CAN PURCHASE TEAMS BY DIVISIONS

4 teams in home uniforms
and 4 teams in away
uniforms for a total of
8 teams per package at
\$56.00. (A \$64 Value!)

NFL DIVISIONAL SETS OF 8 TEAMS

DIVISIONS	AFC NORTH	AFC SOUTH	AFC EAST	AFC WEST	NFC NORTH	NFC SOUTH	NFC EAST	NFC WEST	TOTAL SETS AT \$56.00 A SET OF 8 TEAMS (4 HOME - 4 AWAY)	TOTAL \$
TEAMS INCLUDED IN EACH DIVISION	CLEVELAND PITTSBURGH BALTIMORE CINCINNATI	HOUSTON TENNESSEE INDIANAPOLIS JACKSONVILLE	NEW ENGLAND MIAMI NY JETS BUFFALO	SAN DIEGO OAKLAND DENVER KANSAS CITY	CHICAGO GREEN BAY MINNESOTA DETROIT	NEW ORLEANS CAROLINA TAMPA BAY ATLANTA	WASHINGTON PHILADELPHIA DALLAS NY GIANTS	SAN FRANCISCO ARIZONA SEATTLE ST. LOUIS		
QTY. SETS										

NFL DIVISIONAL SETS OF 8 TEAMS

COLLEGE TEAMS

SETS OF 11 NCAA TEAM PLAYERS HAND PAINTED IN OFFICIAL UNIFORMS

DARK JERSEYS				WHITE JERSEYS				UNIFORM NUMBERS			
TEAMS	NO.	QTY.	PRICE	NO.	QTY.	PRICE		FOR DARK JERSEYS	FOR WHITE JERSEYS		
ALABAMA	5-50-D		\$8.00	5-50-W		\$8.00		5-6024-W	5-6024-R		\$1.00
ARKANSAS	5-51-D		\$8.00	5-51-W		\$8.00		5-6024-W	5-6024-R		\$1.00
FLORIDA	5-52-D		\$8.00	5-52-W		\$8.00		5-6024-W	5-6024-BL		\$1.00
FL STATE	5-53-D		\$8.00	5-53-W		\$8.00		5-6024-GO	5-6024-R		\$1.00
GEORGIA	5-54-D		\$8.00	5-54-W		\$8.00		5-6024-S	5-6024-R		\$1.00
GA TECH	5-55-D		\$8.00	5-55-W		\$8.00		5-6024-B	5-6024-B		\$1.00
ILLINOIS	5-56-D		\$8.00	5-56-W		\$8.00		5-6024-W	5-6024-BL		\$1.00
KS STATE	5-57-D		\$8.00	5-57-W		\$8.00		5-6024-S	5-6024-R		\$1.00
MIAMI	5-58-D		\$8.00	5-58-W		\$8.00		5-6024-Y	5-6024-G		\$1.00
MICHIGAN	5-59-D		\$8.00	5-59-W		\$8.00		5-6024-Y	5-6024-BL		\$1.00
MI STATE	5-60-D		\$8.00	5-60-W		\$8.00		5-6024-W	5-6024-G		\$1.00
MINNESOTA	5-61-D		\$8.00	5-61-W		\$8.00		5-6024-Y	5-6024-BR		\$1.00
MISSISSIPPI	5-62-D		\$8.00	5-62-W		\$8.00		5-6024-W	5-6024-R		\$1.00
NEBRASKA	5-63-D		\$8.00	5-63-W		\$8.00		5-6024-W	5-6024-R		\$1.00
PA STATE	5-64-D		\$8.00	5-64-W		\$8.00		5-6024-W	5-6024-BL		\$1.00
PURDUE	5-65-D		\$8.00	5-65-W		\$8.00		5-6024-GO	5-6024-B		\$1.00
TENNESSEE	5-66-D		\$8.00	5-66-W		\$8.00		5-6024-W	5-6024-Y		\$1.00
TEXAS	5-67-D		\$8.00	5-67-W		\$8.00		5-6024-W	5-6024-BR		\$1.00
TX A&M	5-68-D		\$8.00	5-68-W		\$8.00		5-6024-W	5-6024-Y		\$1.00
VA TECH	5-69-D		\$8.00	5-69-W		\$8.00		5-6024-W	5-6024-BR		\$1.00
WISCONSIN	5-70-D		\$8.00	5-70-W		\$8.00		5-6024-W	5-6024-R		\$1.00
WASHINGTON	5-71-D		\$8.00	5-71-W		\$8.00		5-6024-W	5-6024-BL		\$1.00
OKLAHOMA	5-72-D		\$8.00	5-72-W		\$8.00		5-6024-W	5-6024-R		\$1.00
TOTAL											

NOTE: NUMBERS AND BASES NOT INCLUDED AND MUST BE ORDERED SEPARATELY.

Mail check or money order
along with this entire form to:
MIGGLE TOYS, INC.
1384 Sheridan Road
Highland Park, Illinois 60035
877-432-0140 or 847-432-0140

TOTAL OF ALL PARTS ORDERED	
SHIPPING & HANDLING FOR ORDERS UNDER \$25	\$5.50
SHIPPING & HANDLING FOR ORDERS OVER \$25	\$7.50
SHIPPING & HANDLING FOR ORDERS OVER \$100	\$10.00
SHIPPING & HANDLING FOR GAMES & ACCESSORIES SHOWN ON PAGE 13	
ADDITIONAL FOR EXPRESS DELIVERY	
GRAND TOTAL	
ENCLOSE THIS AMOUNT ----->	

IMPORTANT: PLEASE READ BEFORE PLACING ORDER.

- TO FACILITATE DELIVERY PRINT YOUR NAME AND ADDRESS CLEARLY.
- REPLACEMENT GAMEBOARDS ARE NOT SOLD SEPARATELY.
- REPLACEMENT PART PRICES SUBJECT TO CHANGE WITHOUT NOTICE.
- ALLOW 4-6 WEEKS FOR DELIVERY WITH PERSONAL CHECK.
- MONEY ORDER PAYMENTS/ONLINE CREDIT CARD ORDERS SHIPPED FASTER.
- NO C.O.D. ORDERS - NO STAMPS - NO CREDIT CARDS.
- SORRY - NO PHONE OR FAX ORDERS.
- PRICES SHOWN ARE FOR DELIVERY TO U.S.A. ADDRESSES ONLY.
- EXPRESS DELIVERY: ONLY ORDERS PAID FOR WITH A MONEY ORDER OR ONLINE WITH A CREDIT CARD CAN BE SHIPPED BY EXPRESS. EXPRESS DELIVERIES ARE SHIPPED WITHIN 5 DAYS OF OUR RECEIPT BY AIRBORNE EXPRESS AT AN ADDITIONAL COST OF \$15 IF YOUR ORDER IS UNDER \$25 AND \$20 IF YOUR ORDER IS OVER \$25. PHONE NUMBERS ARE REQUIRED. NO SATURDAY DELIVERIES.
- CALL FOR FREIGHT CHARGES ON ORDERS OVER \$500.00.
- CLAIMS FOR FREIGHT DAMAGED MERCHANDISE MUST BE RECEIVED WITHIN 7 DAYS. ANY OTHER CLAIMS MUST BE MADE WITHIN 30 DAYS.

**FOR PARTS INFORMATION CALL TOLL FREE (877) 791-6644 OR Calls
placed outside USA (815) 389-8388. (7:00 AM to 1:00 PM CST)**
Order Online at www.miggle.com (credit cards accepted Online only)

Postage: Prices shown are USA only - Foreign orders priced separately.

PLEASE PRINT CLEARLY
DATE

NAME

PHONE ()

ADDRESS

APT. #

CITY

STATE

ZIP CODE

EMAIL ADDRESS:

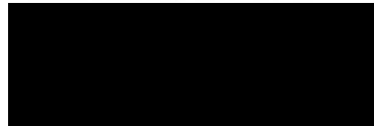
IS THIS A NEW ADDRESS? YES NO





Miggle Toys Inc.
1384 Sheridan Road
Highland Park, IL 60035

*****3-DIGIT 366
85 437 #



PRESORTED
STANDARD
U. S. POSTAGE
PAID
PERMIT NO. 382
SOUTH HOLLAND, IL

ADD MORE FUN TO YOUR GAME! GREAT ACCESSORIES AND GREAT GIFTS TOO!



OFFICIALS: UMPIRE AND 2 REFEREES



BACKFIELD COACH, LINE COACH AND HEAD COACH



REPORTER, TEAM OWNER, AND CAMERA MAN



6 CHEERLEADERS HANDPAINTED IN RED



6 CHEERLEADERS HANDPAINTED IN BLUE



Magnetic bases
are built in so
that these
pieces do not
move on the
gameboard.



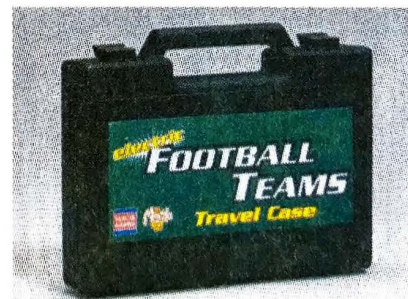
STORAGE OR TRAVEL CARRYING CASES FOR YOUR ELECTRIC FOOTBALL TEAMS!

Two cases available made from Hi Impact plastic to withstand damage; inside the teams travel in the luxury of a foam holder. Larger case has center foam insert.

LARGER case holds **8 teams**
(with or without bases)
for only **\$24.99**

SMALLER case holds **2 teams**
(with or without bases)
for only **\$14.99**

**GREAT GIFT ITEM
FOR YOU OR A FRIEND!**



MORE MIGGLE GAMES FOR YOUR PLEASURE!

Electric Baseball—
realistic and authentic
major league action!

Action Bowl—great for
the little "tykes." set up a
bowling alley in seconds
and roll strikes and spares...
it's so easy.

Available now in our online
store at www.miggle.com
or order on **Page 15** of
this newsletter.