

PLUGGED IN!

THE OFFICIAL NEWSLETTER OF ELECTRIC FOOTBALL

Fall 2006, Vol. XII No. 2

2007 EFL SUPER BOWL & CONVENTION HEADING TO FLORIDA

For the first time in the 13 year history of Miggle Toys' Official Electric Football Super Bowl & Convention, a city in the Deep South will play host to our annual extravaganza.

After many months of research and negotiations,



Embassy Suites Jacksonville Hotel, site of 2007 Miggle EFL Super Bowl & Convention

Michael and Delayne Landsman of Miggle Toys are delighted to announce that the 2007 EFL Super Bowl & Convention will be held from January 26-28, at the **Embassy Suites Jacksonville (FL) Hotel, Florida**, located not far from the Jaguars' home field of Alltel Stadium.

The 2007 event will mark the fourth consecutive year that an Embassy Suites property will serve as the host site of the weekend's festivities, which will continue the tradition of EFL coaches and their families enjoying all the conveniences, lodging space, complimentary extras and services that Embassy Suites so cheerfully provide. Also, as a special accommodation to our EFL group, the Jacksonville Embassy Suites has dropped its January per suite per night rate to under \$100 *for the first time ever* for EFLers.

"We are very excited about being able to bring our Annual Electric Football Convention to the

State of Florida where many of our best and most enthusiastic coaches live," stated Michael Landsman, president of Miggle Toys and commissioner of the Electric Football League (EFL). "So many of you have asked us to do so in recent years, and we want nothing more than to accommodate your wishes."

Added Delayne Landsman, Michael's wife and partner at Miggle Toys: "We are especially delighted that we not only have been able to keep the cost of the suites down once again this year (\$99.00 per suite, per night for two guests), but also retain the features of our event that everyone has come to love and expect—a nice large suite, a spacious ballroom for great competition and, of course,

continued on page 9

CATCHING UP WITH COACHES WHO HAVE BEEN SHORT-CIRCUITED

Over the past year, many of our closest and dearest friends among our fraternity and sorority of coaches have experienced serious personal and family challenges that have taken them away from our hobby for extended periods of time. Some of these situations have been health-related, several have been the result of natural disasters and still others fall into a variety of other circumstances.

PLUGGED IN! has been in contact with a number of our brethren over just the past few weeks, and would like to share two particular stories with you.

First, we heard from **Mike Pratt** of Hollidaysburg, PA. at the end of the first week of September. An Electric Football innovator, goodwill ambassador, expert base 'tweaker,' painter extraordinaire and confidante, his e-mail said:

"This has been a tough year for me. Surgery to remove masses on the inside and outside of my spinal cord has presented me with many challenges. The surgery went well but I have a long three years of intense rehab before I will know what my more permanent condition will be.

"When not in rehab, I still turn my attentions

to all things EF. It is something that has been in my life since childhood and will never go away. I still work on bases and team-builds for various coaches across the country, field phone inquiries about board tweaks and EF on-field strategies. Most of my concentrated efforts this year, though, have been helping the Nation High-Voltage Football League. It requires a tremendous amount of work from the committee and its membership. Plans are to participate again this season with my Marauders. With any luck I will receive flight clearance from my doctors to attend the playoffs in Kansas City on April 13-15, 2007.

"May All Your Games Be Filled With Good Vibrations."—Mike Pratt

Everyone at Miggle Toys and in the EFL community wish Mike well and support him in all of his personal and EF endeavors!

During the second week of September, we got in contact with the only three-time Miggle EFL Super Bowl champion, **Ron Bell**. As most of you know, Ron, his wife Tessie and their family lost their home and virtually all of their possessions in New Orleans as a result of Hurricane

continued on page 6

INSIDE THIS ISSUE OF PLUGGED IN!

- 2 Letter from The Commissioner & a Miggle Chatboard Success Story**
- 3 Getting Connected With...a former NFL All-Pro Linebacker & Hot Wires Column**
- 4 More of My Favorite EFL Memories & Words of Wisdom on EFL**
- 5 Solitaire Playing Tips**
- 6 Watt's New at Miggle?**
- 7 Introducing our new Webmaster & Meet the New Dixie EFL**
- 8 Driving Distances to Jacksonville & Super Bowl 13 Forms**
- 9 Convention Schedule & Key Facts about Jacksonville**
- 10-16 Miggle Products, Order Forms, Etc.**

Tudor Games, Electric Football, EFL & Electric Football League are registered trademarks of Miggle Toys, Inc.

NFL and the NFL Shield, NFL Team Names and Logos and the name 'Super Bowl' are registered trademarks of the National Football League, and have been approved for use by Miggle Toys in its product category by the NFL.



A LETTER FROM THE COMMISSIONER

Michael Landsman



**Michael Landsman,
Commissioner**

I hope all of you were excited to read on the cover of this issue of PLUGGED IN! that Miggle Toys not only has kept our promise to bring the 13th Annual Official Electric Football Super Bowl & Convention to a city in the Southeastern USA, but also that we have been successful in keeping our annual weekend of competition

and camaraderie at an Embassy Suites hotel!

Yes, next year's big Electric Football weekend will be held at the Embassy Suites Jacksonville (FL) Hotel over the weekend of Jan. 26-28, 2007.

Although one of the newest franchise's in the NFL, Jacksonville has already proven itself to be a terrific football town that I personally can't wait to visit.

As the Embassy Suites has provided our group with their lowest possible in-season rates, we urge all of you to make your reservations as early as possible so you can lock in your place at our Convention. And, as most airline prices to Jacksonville for next January also are at their lowest at this time, we encourage you to look into booking your flights as soon as possible if you will be flying that weekend.

Another great idea, because of the tremendous number of attractions, recreational opportunities

and relaxation venues in the Greater Jacksonville area, would be to turn your trip into a mini-vacation by extending your stay at the Embassy Suites Jacksonville Hotel beginning January 24th thru January 29th at the same nightly suite rate.

I also would like to announce that Miggle now has a DVD available to help many of you better understand certain aspects of Electric Football (e.g., how to play better and base tweaking). Put together by **Sean Carter** and **Rene Smith** of Baltimore, two coaches who possess an enormous amount of EF experience and expertise between them, the DVD is free if you send \$2.95 for shipping & handling to Miggle Toys.

Changing gears, we have delayed the release of our Soccer game from a previously announced introduction date in order to complete our planned improvements to enhance the excitement and play of the game. The new game will be ready for the 2006 Holiday Season—so keep an eye on our website (Miggle.com) where we will announce when the game will be ready for shipping.

On another note, although Miggle will continue to publish two PLUGGED IN! newsletters a year, due to the ever-increasing costs of printing and mailing, only one of them—the Fall issue—will be mailed. The Spring issue, however, will be available on our website for all to enjoy. If you don't have access to a computer, we suggest you go to a local library or coffee shop, which usually have computers with internet access for your use.

PLUGGED IN!

Fall 2006, Volume 12 No. 2

Published by
Miggle Toys, Inc.
1384 Sheridan Road
Highland Park, IL 60035
Phone: (847) 432-0140
Toll Free: (877) 432-0140
Fax: (847) 432-3140
Website: www.miggle.com
E-Mail: Info@miggle.com

Publisher & Editor Delayne Landsman
Copywriter/Layout Ira H. Silverman/
Silverman
Media&Marketing Group
Design Joei Shavitz

Subscription Information: Send check or money order for \$3.00 payable to Miggle Toys/PLUGGED IN!, 1384 Sheridan Road, Highland Park, IL 60035

Or you could have a friend, colleague or relative print out a copy for you from their computer.

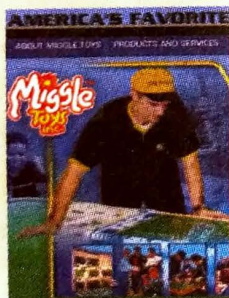
Yes, as football season really gets into full swing this time of year, you can see we are very excited about a lot of activities, products, events and projects here at Miggle Toys. We think it is going to be a great season, and we look forward to seeing all of you in warm, sunny Jacksonville, FL, over the January 26-28, 2007 weekend.

See you over the Metal Gridiron!

Michael Landsman
President, Miggle Toys, Inc.
Commissioner, Electric Football League

TEEN TURNED ON TO EF THROUGH MIGGLE CHATBOARD

On July 13, 2006, Ryan Cotto of Tampa, FL, posted on the Miggle chatboard: "I'm 15 right now, and I'd like to give EF a shot. I am very new to this game and would like to know what is the easiest way to learn how to play. I have a version 500 board I bought for about \$8 on EBAY. If you have any info on this please reply."



**Miggle Toys' Website
helped connect a teenage
rookie with the EFL.**

Well, the EFL community came through big time for Ryan! Dozens of coaches handed off their ideas and suggestions, and were unselfish with their advice and recommendations.

From "Biglock" in Miami, FL, came these words of wisdom: "Welcome to the hobby, it is good to see another young person join our ranks. A 500 board is good to start on, but eventually you should move up to a 620 when you are able to."

Ryan C. quickly responded by pointing out that the place his 500 board was in at that time was shaped like a dome so he made it an indoor field. He then went on to write that he would be looking to get a version 620 pretty soon, too.

Shortly thereafter, Ryan got even more encouragement from "Wizfan99," a 14 year newcomer to the hobby from Virginia Beach, VA, who stated: "It's a good thing you came to this website. The guys on this forum really helped me out!"

And help Ryan C. out they did.

"Ray F" of Brookeville, MD, took the time to post the basic EFL "Rules and Playing Guide for Beginners" that ran some five pages—just perfect for Ryan and other newbies to the game to print out, read and keep for future reference.

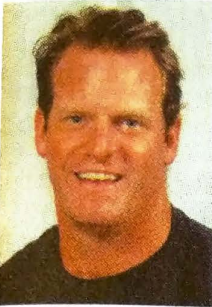
Ryan was obviously quite appreciative of Ray F's gesture and noted: "Thanks for all your help. I stayed up late just playing match ups by myself (lol). Quick question though: Besides the size and the way they look, what's the difference between an old player (the ones that only have four or five positions that came with the version

500) and the new ones?"

Ray F quickly came to the rescue: "Go to the Miggle home page and review the product line. Here is the link to player types: http://www.miggle.com/store/index.asp?DEPARTAMENT_id=90. Also look at the Tudor history page listed on the Miggle home page. The original 3-D figures were molded with the base attached using a softer plastic; they came in 5 poses and 2 colors. Then in 1967, Tudor manufactured 3-D figures in 5 poses (fab 5) using a hard plastic and bases separately using a soft plastic like we have today. The advantage was the ability to pub bases that ran straight or fast on your skill position player. They were also painted in your favorite NFL and AFKL uniform colors, causing a great stir among 10-12 year olds across the country."

On behalf of Ryan C., we at Miggle Toys would like to thank all of the thoughtful and generous Coaches who welcomed a teenager to our hobby with open arms, great information and super encouragement. ■

GETTING CONNECTED WITH...STEPHEN BOYD



Stephen Boyd

Former Detroit Lions star linebacker **Stephen Boyd** has starred at every level of football he has played—and he credits *Electric Football* for his passion for the game and his desire to be the best.

Stephen was raised on Long Island, NY, where he excelled on the gridiron at Valley Stream Central High School, winning the coveted Thorp Trophy in his senior season (1989) emblematic of being the best football player in Nassau County.

A tough, dominant and quick linebacker and fullback, Stephen was recruited by Boston College to help head up their defense. While at BU, he was named All Big East and All ECAC in '93 and '94, the ECAC's Player of the Year in '94 and was invited to play in two post-season collegiate all-star games. This fall, Stephen will be inducted into the BC Varsity Club Hall of Fame.

The Lions drafted the 6'1", 244 pounder in the fifth round of the '95 NFL Draft, and he helped take them to the playoffs in '95, '97 and '98. He played seven years in the NFL with Detroit, earning two Pro Bowl selections and finishing his career in '01 as the franchise's third all-time leading tackler.

Today, Stephen is back living on Long Island, coaching football and teaching phys. ed. at top-rated Chaminade High School in Garden City, NY, and in the process of setting up football training programs for aspiring Stephen Boyds of the future. **PLUGGED IN!** had the opportunity to have a couple of conversations about Stephen's love and appreciation of *Electric Football* late this summer, and here are the highlights of those talks:

PLUGGED IN! (PI!): How old do you think you were when you first saw and played *Electric Football*—and with whom did you usually play?

STEPHEN BOYD (SB): I was somewhere around seven, eight or nine years old when I first started playing *Electric Football*. I always played with my older brother, Richard.

PI!: What were your first thoughts of the game?

SB: We loved the game from the very beginning. We both thought it was the best game we had.

PI!: When did you get your first *Electric Football* game? Do you remember what Super Bowl teams came with the game?

SB: We probably got our first *Electric Football* game around 1979. It came with the Pittsburgh Steelers and Dallas Cowboys. Even back then at that age I was a big fan of Jack Lambert, the Steelers star linebacker, so I was thrilled that one of the teams in the game was Pittsburgh.

PI!: As you got older and more into the game, were there particular "realistic" parts of the game that really intrigued you?

SB: Aligning the players was my most favorite part of the game. I liked the fact that I could be in control of where my offensive and defensive teams lined up for each play. I liked that you had all the different choices and options, and that the game really called for a lot of skill and not luck.

PI!: Did you guys ever try to devise plays on the *Electric Grid-Iron* that could be used in a real game?

SB: We sure did! We worked with the dials on the bottom of some of the bases to change the blocking patterns of the linemen, then we would actually run each play to see how we did. The dials—which I understand are now called total control bases—really gave us an opportunity to get creative with the game.

PI!: Can you tell us about any connections between the times and ages you were playing *Electric Football* and your thoughts then to actually become a professional football player in the NFL?

SB: To tell you the truth, it was because I got the *Electric Football* game and loved it so much that I switched in my real sports life from soccer to football. I just wanted to play the game I loved on the metal board on a real field with other kids. I was nine years old, and joined the Pop Warner League's Valley Stream Green Hornets, and right from the start I felt I could play better than all the other guys.

PI!: The game has made a tremendous comeback among football fans of all ages—especially kids 7-17—over the past decade. Why do you think that's happened?

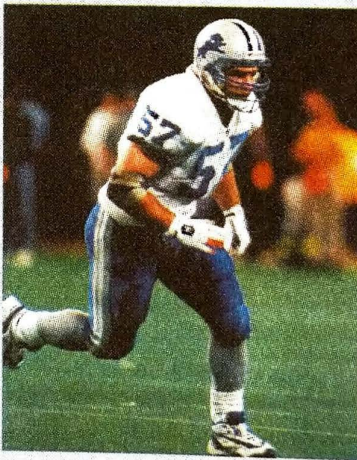
SB: I think the main reason young people are starting to play *Electric Football* again is because it is so much more interactive than the X-Box, video and hand-held games they have been playing. By that I mean they get to play the game with friends and family, making it more social than other football games. I would guess that a lot of kids today are being shown how to play the game by their parents or grandparents who played *Electric Football* when they were growing up, and they kind of like the "retro" feel and look of the game.

PI!: What do you think are the two best assets of the game that attract the most people to the game of *Electric Football*?

SB: I have to go back to the two things that I loved most about the game when I was a kid and say they probably are the same reasons people enjoy the game so much today—the fact that it allows you to have **hands-on** control of the players along with the ability to create your own strategy.

PI!: Stephen, thanks so much for this "electrifying" interview, and good luck with your new endeavors.

SB: Thanks. Maybe I'll bring an *Electric Football* game into school so I can demonstrate set-ups and plays to my students! ■



Linebacker Stephen Boyd is #3 all-time in tackles for the Lions

HOT WIRES!

How Elly Spent Her Summer Vacation

Sometimes (though not often) there are certain things in life—challenges, adventures, new places, new people—that take precedence over *Electric Football*. This summer, 19 year old Elly

Hargrave, who has won both the EFL Women's Super Bowl and the Spark Bowl for Kids and is a past EFL Newcomer of the Year Award recipient, had the opportunity of a lifetime to leave her *Electric Football* gridiron at home and travel the world. Here's her story in her own words:

"This summer I found myself traveling half way across the world from Nicholson, PA, to Southeast Asia on the Semester at Sea's ship Explorer. We boarded the ship in Ensenada, Mexico, sailed

for a week to Hawaii and then took almost two more weeks before reaching our first port of harbor in Asia: Keelung, Taiwan.

"The two months on this learning excursion passed quickly as we made our way to Singapore; Kuantan, Malaysia; Ho Chi Minh City, Vietnam; Hong Kong; Beijing, China; Busan, Korea; and Kobe, Japan.

"Though we had some scares throughout the trip (e.g., N. Korea sending practice missiles toward

continued on page 5

OUR FAVORITE ELECTRIC FOOTBALL *Memories!*

*Here we go again—with many of **your** favorite Electric Football stories—some funny, some poignant, some happy and some nearly tragic. But what they all have in common is a clear passion among all of us for this classic game. Here's the kickoff:*

CHRIS LEMAY, 49, WOODWORKER AND CABINET BUILDER FROM NOLENSVILLE, TN:

"My favorite Electric Football memory occurred nearly 40 years ago when I was about 10 years old. It was the first time that I saw an electric football set. I was at my friend John's house and it was a set that had the Dallas Cowboys in white jerseys and the Green Bay Packers in dark jerseys. Since the Packers were my favorite team at the time, I chose them and received the kickoff to begin the game. I then began to set up my players in a huddle for the next play, fully expecting them to break the huddle and run up to the line of scrimmage! John cracked up laughing. I don't remember too much more about the game after that, but I knew from that moment on that I had to have an electric football set of my own the next Christmas."

CRAIG HANSEN, 54, IMPORT AGENT FROM NEWPORT, KY

"My Favorite Electric Football memory is from my childhood and involves my future (and now ex) wife's brother, who at the time was a very good friend of mine. He had invited some of our group over to play football. The day was very cloudy and had been snowing and I thought he was crazy. But he told us he had a game with 'teams' that played on a vibrating board and we could play most any day. This first time playing Electric Football led to my requesting my own game, an original model 620 with Browns and Giants (the smaller sized players). In anticipation

of my Christmas present, I saved up my lunch money and money I got from Halloween until the last day before Christmas break, and was able to add additional teams."

JAMAL X. LOCKHART, 36, LAW ENFORCEMENT WORKER FROM MIAMI, FL

"I would say the most enjoyable memory I have had in this hobby would be my first EF tournament, The Seawall Brawl. I was excited for months about it, and the anticipation I had of meeting so many people I admired and respected in the Hobby since 2004 was keeping me pumped up. Once I arrived, I was greeted with the biggest bear hug I'd ever received from Bill Porche. After that I knew that I was involved in something special. So many guys who came together to make my first tournament experience so memorable. The whole weekend was one of Friends, Family & Fellowship—and trust me, it is a memory that Big Lock will cherish for the rest of my days."

AL DUNHAM, 40-SOMETHING, AUTO MECHANIC FROM RAVENNA, MI

"About 2 1/2 years ago, Green Bay Glenn posted some pics of a prototype for his Imaginary League team, the Hawaii FireLizzards. I thought that they were the nicest looking team I'd ever seen—so ever since then I've been pestering him to finish the team. Around the first of August, he put up a post stating that he had finally finished them, much to my delight. About two weeks later, I got a box in the mail. It was from Glenn. I couldn't imagine what he would have sent me, so imagine my surprise when I opened it and there was the FireLizzard team painted in their home uniforms! This is the greatest gift I've ever received in my life. Glenn's talent in painting is only matched by his generosity. I will cherish them forever!"

SEAN CARTER, 40, FROM BALTIMORE, MD

"One Saturday afternoon during the summer of 2002, I was relaxing on the deck with my dog, Jasmine. Suddenly I heard a familiar sound. BUZZZZ! Then loud voices and screams of excitement! I put Jasmine on her leash and went to investigate."

"Smitty (Don Smith) was having an 'EF' Bar-B-Que. He had two large tents in his front yard and each tent had two game tables set up underneath them. There was a big game board in the driveway and a mob of coaches circled around it. My long-lost, but not forgotten, childhood game had been resurrected. It felt like Christmas in July. You see, when I went off to college, I gave all of my 'EF' collection to my younger cousins. These guys were running plays. They had new figures, field covers and a company named Miggle Toys was behind it all! I now sit as a proud member of this international hobby!"

FRANK SALLES OF WEST BABYLON, NY

The Heist, Brooklyn NY, 1990

"This story took place in the dark days after the Tudor dynasty had died and the buzz was silent: A Superior king ruled now...but knew not how. Two friends sought out the Tudor castle cold and dark. A gatekeeper, bent and old, led them down silent hallways where Tudor Kings once strode. He brought them to the darkened dungeon bestowing upon them bags of gold."

"Upon their return to the light he said, 'You now own the very last of a glorious past, I know not how, nor when, but what once was will be again,' and closed the door. It was to be locked forevermore."

"Upon their return, the two adventurers were asked: 'Why take such risk? Was it for money? Was it for fame?' 'No' said Frank and John, 'It was for the love of the game.'" ■

WORDS OF WISDOM, ELECTRIC FOOTBALL STYLE

When a game has been around for almost 60 years—like Electric Football—a book with a title such as "Landsman's Familiar EF Quotations" certainly could be written. With this thought in mind, Miggle Toys invited visitors to our website to submit their favorite Electric Football sayings, mottoes or truisms. Here are a bunch of our favorites:

From Captain Dave EL:

- In EFL...if you can't win without cheating, then you should probably be playing solitaire.
- EFL...Suit Up or Shut Up but don't Give Up!

From Al Dunham:

- To err is human, but not on my team.

- Give a coach a tweaked base and he'll play for a day, teach him to tweak and he'll play forever.
- Electric football is a fountain of youth. Play it and you're a kid again. Fortunately, when you're done you return to your age so that you can drive yourself home.
- Confucius say: "Electric football much like making love. Starts with being turned on, followed by much noise and shouting, and usually ends up with one person ecstatic and the other disappointed."

From Mark Robin:

- That hole opened so wide, Moses must have done it.

From Mike Guttman:

- His base goes straight on MY board.

From Reggie Rutledge:

- Don't worry about what's happenin' in the other team's locker room, worry about what's happenin' in your own locker room.

From Kansas Bill:

- The artificial intelligence of my electric football men is no match for my natural stupidity.

From Wolverines:

- Can you feel the electricity in the air?
- The Coach has his finger on the trigger.
- I believe the Coach has pulled the plug on this game...Its over. ■



TIPS FOR WINNING AT SOLITAIRE PLAY

Ron (Bearzfan!!) **Rosario** of Davenport, Iowa, is one of the most loyal and enthusiastic coaches of Solitaire Electric Football in the U.S. Known for his attention to detail, creativity and a varied offense, **PLUGGED IN!** recently approached Ron and asked him to provide all of us with some of this most important and useful tips. He was delighted to comply, and his report from the central region of America follows:

With a new NFL AND EFL season about to begin, here's how I prepare my solitaire EF team(s) for a simple (3 basic plays) but effective, running game from the I-formation:

1) Always have a ready passing game since it's tough to run against 9 in-the-box in any kind of football.

2) Have a FAST, wide-sweeping QB on TTC for outside bootlegs to keep looping defensive ends honest.

3) Put PRO-Line strength dials on offensive linemen and tight ends, and go without them with offensive tackles, your center, offensive guards, tight ends.

4) Have FAST Tail Backs that slide one way, but turn the opposite direction, to find holes (usually an off-tackle hole)...OR stay behind and are protected by the offensive line and/or a SLOWER but strong FB.

5) 30% of the time, run your Tail Back off-tackle between the DT and DE gap created by the wide QB bootleg to that side, no need to angle TB/FB as the sliding/turning TB will SLIDE to the gap/hole.

6) 30% of the time, run TB inside zone (angle TB at the opposite offensive guard the same direction it turns, opposite direction it slides) as DT's start cheating outside technique to defend off-tackle.

7) 40% of the time, QB bootleg pass or bootleg run (if DE starts to crash inside to defend off-tackle run).

Best Wishes for the 2006-7 season.

PLUGGED IN! Tip: Ron can be reached at (563) 388-9352. ■

HOT WIRES!

Continued from page 3

our harbor in S. Korea and a tsunami-threat during our last few days in Japan), all in all it was an excellent learning experience filled with adventure.

"This 'essay' is just a taste of what my summer semester at sea voyage involved. The whole story and more photos are now posted at: <http://www.freewebs.com/elharg15/>."



Elly Hargrave at one of her favorite stops on her summer tour of the Far East

Raiderman Planning New Tourney For Families

Paul "Raiderman" Bartels of Harrisburg, PA, began talking about putting on a "Family Teammates Electric Football Tournament" over the summer on the miggle.com chatboard. It caught the attention of **PLUGGED IN!** editor **Delayne Landsman**, wife of Miggle Toys president Michael Landsman, who asked us to contact Raiderman and have him fill us in on his ideas. Here are highlights of that talk:

How did you first come up with the idea to try to put together a family teammates Electric Football Tournament?

Raiderman: I have seen first-hand through our local league how EF has brought fathers and sons closer together. They look for that one night a week to spend together and sometimes compete against one another.

So why not take it a step further and have a formal tournament where they play together as partners rather than opponents??

Raiderman: Exactly. I started off talking about father-son bonding, but then I went on to say that it could also be big brothers and little brothers as teammates. Through this idea, along with practicing for the event, the two members would have to build their team, as well. This activity will provide more quality time for the teams to spend with each other. In today's world, where everything is so busy and rushed, we as parents, without realizing it oftentimes, forget about our kids.

Where are you thinking about holding the tournament?

Raiderman: My first choice would be in the Fellowship Hall of my church in Harrisburg. It is large enough to host the event, and has plenty of lights and outlets (very important!). Plus, there is a kitchen there so we could provide food during the day, as well.

Who do you think will or should attend such a tournament?

Raiderman: Any combination of two family members who play Electric Football at any skill level should attend the event! I promise it will be a great time and a great tournament.

What types of special rules or modifications do you think you might implement?

Raiderman: The main thing I have in place is that one person must coach the same unit (offense or defense) for an entire half. The teammates would then have the option of changing units for the second half or sticking to their original assignments.

When do you think you might actually stage your first "Family Teammates EF Tournament?"

Raiderman: That's the one issue I have to really work on. I don't want to step on the toes of any of the already-established tournaments. One thought I had was that summer seems to be a good time for families to have free time – but, typically, the

players take time off from EF in the summer. The timing is a work in progress.

What can the readers of PLUGGED IN! do to help make this great idea a reality?

Raiderman: I would love to have them contact me at Raiderman110@hotmail.com with any suggestions or ideas they have for the tournament, especially the time of year they might want to compete in a Family Teammates EF tourney.

PLUGGED IN! urges all coaches who share Raiderman's passion for this tournament to contact him.... and we wish him the best of luck with this formidable idea!

New Web Outlet For Your EF News

FootballOneonOne.com was relaunched in September 2006 by EFL enthusiast Eric Bailey of Greenville, NC, as a way for football fans of all ages to have fun, stay informed, talk about the game, participate in polls, post blogs, watch video clips and listen to special pod shows.

Of particular interest to Hot Wires! Is the fact that Bailey's site will be showcasing many of the sport's various games and hobbies—highlighted by Electric Football. "From back in the day electric football to present leagues, we will keep you updated with all the activities related to electric football," Bailey promises.

Miggle Toys welcomes FootballOneonOne.com to our Electric Football Family, and urges all coaches to visit and support Eric's website. ■



WATT'S NEW AT MIGGLE?

Now it can be told: Miggle Toys and DeWayne Jennings of Electric Gridiron have teamed up to create the perfect roster of accessories that can "Bring The Game of Electric Football to Life."

The starting line-up includes the first commercially printed decals, NFL team color coded facemasks and the most detailed vinyl chinstraps in the history of the hobby.

To introduce the decals, Miggle Toys will offer a limited run of Miami Dolphins decal sets now in away uniforms with more teams to follow. Each decal set will include: helmet and shoulder logos, paint and jersey stripes, jersey numbers and a roster alphabet. Additionally, each team set will include glove and cleat decals.

NFL Team Decal Description:

Because Miggle Toys will be offering the first professionally screen-printed decals in the history of Electric Football, coaches can now forget about dealing with decals damaged from scratches and application and cutting out small decals in tight spaces—and, instead, count on first-class

products in more vibrant and exciting colors to make every detail pop out!

NFL Facemask Description:

Electric Gridiron currently offers 33 color-coded facemask styles designed exclusively for EF figures. The Gridiron-PRO I set is based on the current styles worn by collegiate and professional football players today.

- All Gridiron-PRO facemasks are photochemically etched with three-dimensional detail.
- All Gridiron-PRO facemasks are designed to fit all Electric Football figures.
- DuPont Alesta powder coating is used exclusively on all Gridiron-PRO facemasks. (Alesta provides the quality and durability you have come to expect from a Gridiron-PRO facemask plus two additional features: they are scratch resistant for tough gridiron

battles and PMS color matching for more vibrant and true team colors).

NFL Chinstraps:

Electric Gridiron is the only company that offers scaled chin straps that are designed exclusively for EF figures. We currently offer three popular styles that satisfy the needs of today's specialized players.

- 2-Pt. Standard Hook-Up
- 4-Pt. Hook-Up
- 4-Pt. High Hook-Up

Once again, Miggle Toys is delighted and proud to team up with one of our creative and popular coaches to bring another fun and realistic dimension to your Electric Football play. If you have the **NEXT GREAT IDEA** for our electrifying hobby, please let us know! ■



Partnership of Miggle Toys and Electric Gridiron brings exciting new accessories to EF hobby

CATCHING UP WITH COACHES WHO HAVE BEEN SHORT-CIRCUITED Continued from page 1

Katrina in late August, 2005. We wanted to see how things were with them a little more than a year later.

Ron reported that his family moved seven times in the two months between when the hurricane hit and when they purchased another house in New Orleans just down the block from the home in which Ron grew up. He worked as much as he could at his job with Allstate, and this past June joined Progressive Insurance Company, also on the legal side. Tessie's school and entire district got destroyed by Katrina, however, but she is back teaching in another New Orleans school right now.

As for Ron's Electric Football collection, that's practically gone, too, "except for a few pieces I found in the mud when we were allowed to go back into the house," he noted.

One thing Ron did learn from this experience is just how caring, responsive and unselfish the Electric Football community is. Urged on by Paul

"Raiderman" Bartels, coaches from across the country—many who knew Ron but certainly some who had never met him—started sending him packages from their Electric Football collections. "These gifts weren't 'extras' they had lying around," Ron recalled, "but really special, first-



Look closely: That's Ron Bell's favorite EF board under all that rubble

class pieces. "There were so many people who sent me stuff, or contacted me to find out what I wanted, that I don't want to mention anybody specifically for fear of leaving someone out."

Something Ron still has not replaced is his compilation of playing boards, all of which he lost due to Katrina—even the ones he kept in his attic. That's what 10 feet of water in a house can do.

"Earlier this year, I actually found the board I had been playing on before the hurricane under mud in what had been our kitchen (see photo left). It seems I had been walking across it for six months without knowing it was there."

Ron, we all hope to see you, Tessie, Blake (now 15), Brenna (3 1/2) and Brooks (18 months) at the 2007 Convention in Jacksonville. To help "twist your arm" and get your game back to where it was, Miggle Toys will be sending you a new EF Super Bowl game and some very nice accessories as a gift. Enjoy! ■

MEET THE NEW CHATBOARD MODERATOR

Miggle Toys is delighted to announce that **Mike Guttman** has joined our team as Moderator of the Miggle.com Chatboard, replacing the popular and definitely overworked Lynn "WeirdWolf" Schmidt.

"Mike is the ideal person for this assignment," stated **Michael Landsman**, president of Miggle Toys, "as he is the prototypical, multi-faceted football performer who can handle a variety of responsibilities and duties of great importance and interest all at the same time."

PLUGGED IN! hooked up with Mike shortly after he took over as sole Moderator of the chatboard and here are the highlights of our interview with him.

Question: What's your background and history with Electric Football?

Answer: I've been into EF since I got my first game in 1978—Vikings/Raiders Super Bowl. I've been custom-painting teams since I was 16. I ordered plain white figures from Tudor Games; back then, there were no holes for rookie bases, so I even went as far as using an Exacto knife to cut the holes. I started playing league games three years ago when I found Miggle. I play in the TCEFL here in Minneapolis, and I also play in the NHFL.

Question: How did you hook up with the Landsmans to get this new job?

Answer: When Lynn Schmidt, who is also in the NHFL, was in Minneapolis last season for some league games, he mentioned to me that being the only



Mike Guttman keeping all EFLers up to date

chatboard moderator was beginning to take its toll on him. He asked if I would serve as Co-Moderator with him. I readily agreed, and then this past summer I took over the position full-time.

Question: What are some of the challenges of the job?

Answer: The hardest part about being a moderator is that you can't voice any of your own opinions. I have to keep an open mind. If I don't do so, others may perceive it as me taking sides by being lenient to some members and strict to others. Also, Wolf and I mainly have tried to keep the chat board as child-friendly as possible. We don't want new hobbyists of any age to check the site out and see arguments or vulgar language being used.

Question: Approximately how many hours a week to you devote to working on the chatboard?

Answer: That's a tough question to answer because I'm on the computer around 14 hours a day (10-12 at work and about four at home). I always have Miggle activities open. That's why so many coaches and visitors to Miggle.com see my MTGUTT screen name always on the board.

Question: Tell us a little about yourself.

Answer: I'm 38 and work at Cottage Corporation in Minneapolis, my hometown. We are an acrylics company, building fixtures, sign holders, etc.

We at Miggle Toys want to give a HUGE and HEARTFELT "Thank You" to Lynn Schmidt for his unconditional dedication, integrity and friendship over the years...and we welcome Mike Guttman, we know you'll do a great job. ■

NEW LEAGUE: NEW SEASON, THREE DAYS, ONE CHAMPION

Sixteen Coaches from a handful of Southern states traveled to Spartanburg, S.C., in July 2006 to kick-off the new **Dixie Electric Football League**.

"We use many of the same rules Miggle implements in its own tournaments," said **Bryan Nutt**, Dixie EFL commissioner. "Many coaches, including two-time Miggle champion, **Lavell Shelton**, encouraged me to start the league. Obviously, with support and assistance like that, I couldn't say no."

Shelton is one of 16 coaches from South Carolina, Maryland, Georgia, Alabama and Tennessee who competed in the pre-season rounds in late-July and the regular season in early August. At press time for this issue of PLUGGED IN!, the League's playoffs and championship weekend were slated for September 30 in Spartanburg.

Nutt, known in the EFL world as "Beenutt," explains that a unique feature of the Dixie League is the one-season-in-three-days format.

"Our league consists of three meeting dates per year, with each date being on a Saturday. The first Saturday consists of the *pre-season*, where each coach plays four games. Coaches have an opportunity to get used to the rules and sometimes the rules may be changed before the beginning of the actual season, which takes place on the next Saturday.

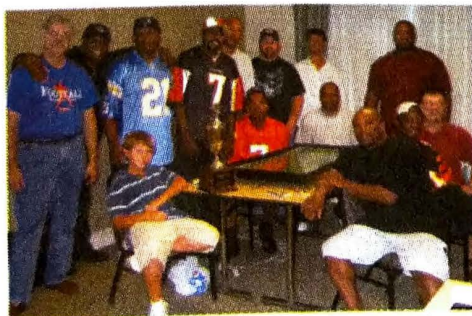
"The regular season features four games played by each coach," Beenutt continued. "The winner of each division automatically qualifies for the playoffs, to be held on the third Saturday. Coaches

who do not win their division compete for a wild card spot that morning before the playoffs begin later that afternoon. The championship game is scheduled for 8 p.m. Saturday," Nutt explained.

Asked about being a part of the Dixie EFL, Lavell Shelton, a former college gridiron star who won Miggle EFL Super Bowls 3 & 4, stated: "I'm proud to be an electric football coach. I promote the game everywhere I go, even at work. The game itself encourages camaraderie and fellowship among many other benefits."

As for the victorious coach's trophy, it's appropriately named the "Dixie Cup," which will rotate annually, similar to hockey's Stanley Cup, Nutt added.

Computing real-time statistics also sets the Dixie League apart from other leagues.



Members of the new Dixie EFL get ready to kick off their inaugural season in 2006

"We enter all of the stats from each game into a laptop computer immediately after each game," Nutt said. These statistics, including offensive points, rushing yards, passing yards, defensive points allowed, defensive rushing yards, defensive passing yards, leading rushers and leading receivers, are displayed throughout the day on a big screen for all coaches to review.

"The coaches love this feature because it shows the strengths and weaknesses of each team," Nutt said.

What makes the Dixie EFL additionally compelling is the wide spectrum of coaching experience among the members of the league—from virtual rookies who just recently began to compete in a league to other coaches who have won national tournaments, such as the Miggle Super Bowl.

Nutt is pleased with the initial success of the Dixie League's inaugural season, and recommends for those considering a similar venture to begin with a core of supportive and serious coaches. These are coaches who not only will attend all meetings, but also be a positive influence on the game of electric football, enhancing the development and growth of the league.

"Then, you can reach out by posting your league plans on the Miggle Board for any coaches who may be in your area," Nutt added.

Congratulations to Bryan Nutt and the Dixie EFL on a successful first year. To reach the DEFL, write bryan@tncengineering.com. ■



DRIVING DISTANCES TO JACKSONVILLE, FL FROM KEY CITIES

City of Origination	Miles	City of Origination	Miles
Akron, OH	870	Miami, FL	341
Athens, GA	370	Milwaukee, WI	1,172
Atlanta, GA	354	Minneapolis, MN	1,493
Baltimore, MD	766	Montgomery, AL	386
Baton Rouge, LA	610	Nashville, TN	606
Charleston, SC	250	New Orleans, LA	554
Charlotte, NC	394	New York, NY	954
Chicago, IL	1,071	Omaha, NE	1,350
Cincinnati, OH	813	Orlando, FL	130
Cleveland, OH	906	Philadelphia, PA	865
Columbus, OH	866	Pittsburgh, PA	840
Dallas, TX	1,052	Raleigh, NC	463
Denver, CO	1,756	Roanoke, VA	590
Des Moines, IA	1,303	Richmond, VA	612
Detroit, MI	1,088	Selma, AL	437
Ft. Lauderdale, FL	316	South Bend, IN	1,031
Ft. Wayne, IN	1,023	Springfield, IL	980
Houston, TX	877	St. Louis, MO	910
Indianapolis, IN	891	Tampa, FL	215
Kansas City, MO	1,158	Toledo, OH	1,007
Los Angeles, CA	2,428	Topeka, KS	1,220
Louisville, KY	756	Washington, DC	720
Memphis, TN	742		

2007 EFL CONVENTION FRIDAY NIGHT DINNER RESERVATION FORM

(PLEASE PRINT)

Due to the great popularity and increased turnout at the annual Miggle Toys-hosted **Welcome Reception & Dinner** at the Official Electric Football Super Bowl & Convention, it is necessary to provide the Embassy Suites hotel with a projected attendance number significantly in advance of the function, scheduled for Friday evening, January 26, 2007. *To guarantee yourself entry to this FREE event, please complete this form, detach and MAIL or FAX before Friday, January 19, 2007, to:*

2007 EFL Convention

c/o Silverman Media&Marketing Group

100 Crossways Park West, Suite 100, Woodbury, NY 11797

Or Fax To: 516/495-5281

NAME _____
 STREET ADDRESS _____
 CITY, STATE, ZIP CODE _____
 PHONE NUMBER _____
 EMAIL ADDRESS _____
 HOW MANY GUESTS WILL BE IN YOUR PARTY? _____
 PLEASE PROVIDE FIRST & LAST NAMES OF ALL GUESTS 3 YEARS OF AGE AND OLDER _____

 HOW MANY ADULTS? _____
 HOW MANY CHILDREN 12 & UNDER? _____

2007 CONVENTION EXHIBITOR APPLICATION FORM

(PLEASE PRINT)

If you are interested in having a **free** display area at the 13th Annual Official Electric Football Super Bowl & Convention at the Embassy Suites Jacksonville (FL) Hotel from January 26-28, 2007 please complete this form, detach and either mail or fax by **January 22, 2007**, to:

2007 EFL Convention

c/o Silverman Media&Marketing Group

100 Crossways Park West, Suite 100, Woodbury, NY 11797

Or Fax To: 516/495-5281

NAME _____
 STREET ADDRESS _____
 CITY, STATE, ZIP CODE _____
 DAYTIME PHONE _____
 EVENING PHONE _____
 E-MAIL _____
 WHAT WILL YOU BE EXHIBITING? _____

WE WILL ASSIGN ONE TABLE PER EXHIBITOR UNLESS ARRANGEMENTS ARE MADE IN WRITING IN ADVANCE AND APPROVED BY THE EVENT COMMITTEE.

DO YOU NEED AN ELECTRICAL OUTLET? (CHECK ONE)

YES _____ NO _____

2006 LEAGUE CHAMPIONS PLAY-OFF RESERVATION FORM

(PLEASE PRINT)

If eight or fewer League Champions reserve spaces in the 2007 Super Bowl tournament, they will be strategically placed among the eight Super Bowl Divisions so that they do not face each other until the Playoffs.

Please mail this form to: Silverman Media&Marketing Group, 100 Crossways Park West, Suite 100, Woodbury, NY 11797 or fax to 516/495-5281

DEADLINE: Monday, January 22, 2007

LEAGUE NAME _____
 LEAGUE CONTACT'S NAME _____
 LEAGUE CONTACT'S PHONE NO _____
 LEAGUE CONTACT'S E-MAIL ADDRESS _____
 NO. OF COACHES IN LEAGUE _____
 NAME OF LEAGUE CHAMPION COACH OR REPRESENTATIVE _____
 PHONE NO. OF LEAGUE CHAMPION OR REPRESENTATIVE _____
 E-MAIL ADDRESS OF LEAGUE CHAMPION OR REP. _____

Any questions should be directed to smmgspports@aol.com

2007 CONVENTION & SUPER BOWL PRELIMINARY SCHEDULE

ALL EVENTS AT EMBASSY SUITES JACKSONVILLE HOTEL

Friday, January 26, 2007

- 2-6 p.m. Exhibitor move in
4 p.m. Check-In at Embassy Suites starts
7-9 p.m. Welcome Reception & Dinner, hosted by Miggle Toys
Announcement of "Player of the Year" & "Breakthrough Coach of the Year" Award Recipients
8-9 p.m. Sign up for Super Bowl Tournament
9:30 p.m.-2 a.m. Practice & Scrimmaging

Saturday, January 27, 2007

- 8-8:45 a.m. Final Sign-Up For Super Bowl Tournament & Exhibitor Move In

- 9 a.m. Convention Opens
9:15 a.m.-4 p.m. Round-Robin play in Dirk Thomas and Kurt Smeby Conference Divisions
10 a.m.-1:30 p.m. Planned programs & activities for Children
2-6 p.m. Spark Bowl For Kids - Preliminaries & Semifinals
Clinics on Playing Techniques & Strategies, Painting of Figures, Setting Up Leagues & More for Adults & Youth Adult Tournament Division Playoffs
4:15-5:45 p.m. Convention Closes for the day
6 p.m. Practice & Scrimmaging
8 p.m.-2 a.m.

Sunday, January 28, 2007 "Championship Sunday"

- 9 a.m. Convention Opens
9 a.m.-Noon Clinics on Playing Techniques & Strategies, Painting of Figures, Setting Up Leagues & more for Adults & Youth
9:15 a.m. Jr. & Sr. Spark Bowl Championship Games
10 a.m. Dirk Thomas Conference Championship Game
11:15 a.m. Kurt Smeby Conference Championship Game
12:45 p.m. Pre Super Bowl Activities
1 p.m. Super Bowl of Electric Football 13 at Miggle Field
3 p.m. Convention Closes

Free raffle drawings will be held throughout the weekend.

2007 EFL SUPER BOWL & CONVENTION HEADING TO FLORIDA

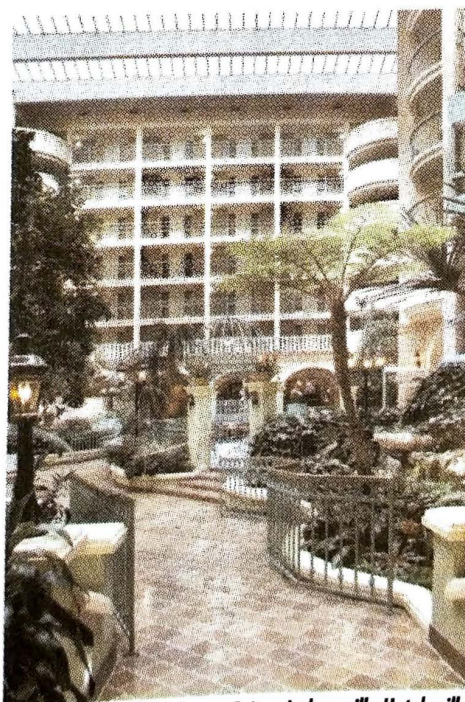
Continued from page 1

our congenial Friday night reception and dinner." Because of the comfortable temperatures in Jacksonville in late January and the ease of reaching the city by plane, car and train, Miggle is expecting the largest turnout ever at the 2007 EFL Super Bowl & Convention. The Landsmans have already checked prices with numerous airline carriers, and have found very inexpensive round-trip fares available from dozens of major markets to Jacksonville, so we suggest you make your travel and hotel reservations as soon as possible.

Coaches will again be able to sign up to compete in the 2007 Super Bowl Tournament on the Friday night and Saturday morning of the Convention for one of the 64-team draws divided into four divisions within two conferences. This format will allow every coach to play up to seven games in the opening round of the tournament before playoffs begin.

Coaches can make reservations for the 2007 EFL Super Bowl & Convention by phone by calling the hotel's toll-free number, 1-800-871-5902 and asking for the "Special Electric Football Rate;" or online by visiting www.embassysuitesjax.com, entering the dates you plan to stay and then clicking in our Group Code—EFS—when it is requested on the next screen. Embassy Suites also is setting up a special Web Page for the 2007 Miggle EFL Convention.

"While there might be a lot of camaraderie, friendship, assistance and advice within the hobby weeks of the year," observed Michael Landsman, the weekend of the official Miggle EFL Super



The Atrium in the Embassy Suites Jacksonville Hotel will be the centerpiece of the 2007 Miggle EFL Convention

Bowl tournament is a no-holds barred affair with a great championship, an awesome trophy and a unique champions ring as the ultimate prize for the winner."

Jacksonville, here we come! ■

JAX FACTS

Did you know that Jacksonville, FL, has the largest total area of any city in the United States? Probably not. So here are some other details, figures and fun facts about the host city for our 2007 Miggle EFL Super Bowl & Convention:

- Jacksonville has the highest population of any city in Florida (736,000 residents) and is ranked #13 in the U.S.!

- The city's climate is subtropical, but tends to be cooler than the Florida peninsula to the south. In January the average high temperature is 66° F and the average low is 41° F.

- In 1994, the National Football League awarded its 30th franchise to Jacksonville. The Jaguars began play in 1995 in Alltel Stadium, which played host to Super Bowl XXXIX in 2005.

- Andrew Jackson, the 7th President of the U.S. for whom the city was named, never actually visited Northeast Florida in his lifetime!

- Northeast Florida was "discovered" by Ponce de Leon in 1513. He and his Spanish crew landed about 25 miles from today's Jacksonville, and named it Pascua Florida as a reminder that his landing occurred during the Feast of Flowers. He claimed the territory for the Spanish crown, then sailed off in search of a magic potion of eternal youth rumored to be a hidden treasure of this new land.

- Joint management agreements with national and state park services give Jacksonville the largest urban park system in the United States. ■

4 Exciting Games—Play Anywhere Anytime!



Power Pro Electric Football

Play real football with teams that you can paint to replicate your favorite team. Battery Operated (Portable Size: 22 3/8" x 13 3/8")

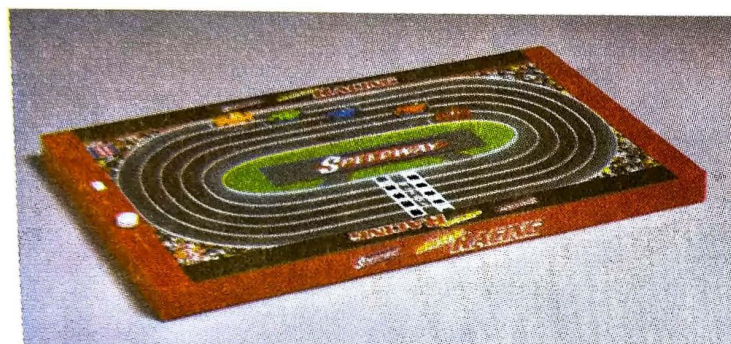
#8500



NFL Portable Electric Football

True to life real football! Teams in hand painted official NFL uniforms. Battery Operated (Portable Size: 22 3/8" x 13 3/8")

#8501



Speedway Electric Auto Racing

Cars move themselves toward the finish line on a vibrating track. Battery Operated (Portable Size: 22 3/8" x 13 3/8")

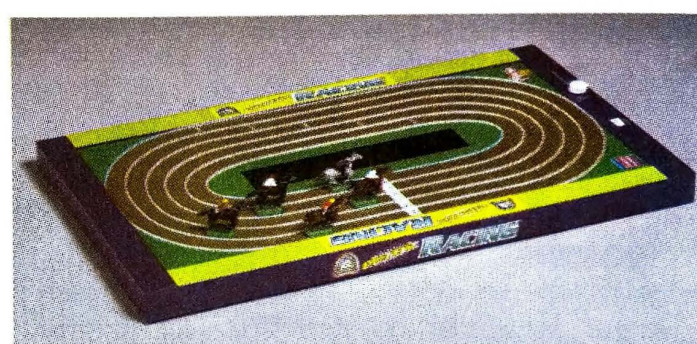
#8502

Extra Formula-type Cars (6 per pack)

#5-6021

Extra Nascar-type Cars (6 per pack)

#5-6022



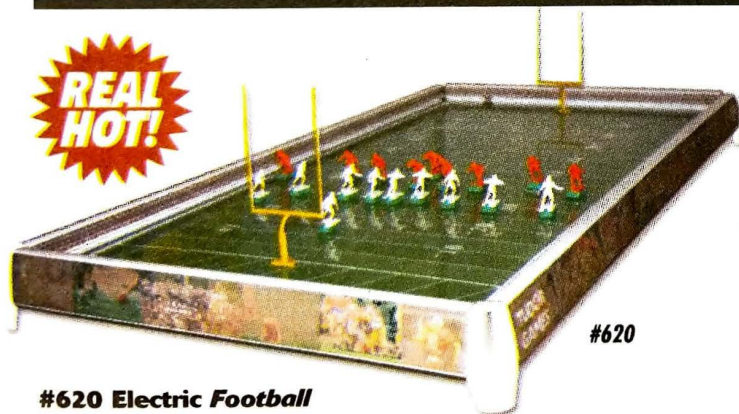
Sweepstakes Derby Electric Horse Racing

Horses move on a vibrating track to the winner's circle. Battery Operated (Portable Size: 22 3/8" x 13 3/8")

#8503

Extra Horses with Jockeys (6 per pack)

#5-6025



#620 Electric Football

The return of a "classic" by popular request, an updated version of the old Tudor #620 Game. Special magnetized goal posts and down marker and all new 10 yard chain. Plug in Electric. (Size: 37" x 20" x 3")

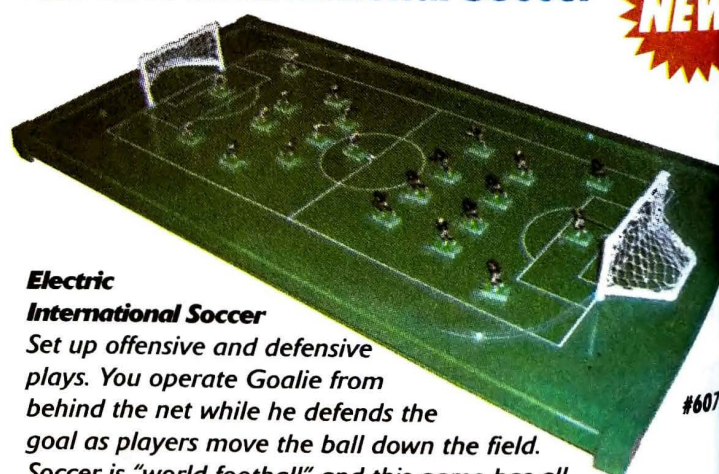
#620

ProLine Deluxe Accessory Pack

2 Magnetized Goal Posts with realistic magnetized 10 yd. Chain and 1 magnetized Down Marker. For ALL Electric Football Games.

#5-6024

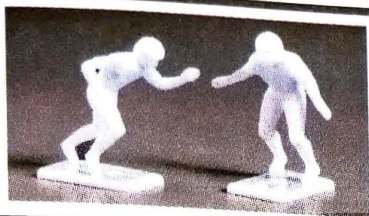
Shipping December 2006 – Electric International Soccer



Electric International Soccer

Set up offensive and defensive plays. You operate Goalie from behind the net while he defends the goal as players move the ball down the field. Soccer is "world football" and this game has all the thrills to make it fun and real-like. Plug in Electric. (Size: 34.7" x 18.6" x 1.8")

#607



"67" BIG MEN

By popular request, we have brought back these larger, more detailed, perfectly balanced players. Sold **painted** or **unpainted**, 11 players to a pack. See price list for details.

Line Players

New custom figures to further enhance your Electric Football enjoyment sculpted by Bill Klingbeil. These new figures are realistically looking,

great performing and at unbelievable low prices. Sold in sets of 5 figures – two different assortments (unpainted). See page 13 to order now.



KEEP SCORE! WITH THE AMAZING ELECTRONIC SCORE BOARD

From the National Anthem through the final minutes of your game, the official Electronic Scoreboard keeps score with crowd cheers, animated graphics and is lots of fun to use! This Electronic Scoreboard will clip right into place and become part of your stadium.



#6078

ELECTRIC FOOTBALL "SHINES BRIGHT" WITH LIGHTED STADIUM

Monday Night Football™ Lighted Stadium Accessory – So real you can almost hear the crowds!

- Play "night games" in a LIGHTED stadium with working scoreboard
- Easy to assemble—Can be easily taken apart for storage.

#6076 - Monday Night Electric Football – (not shown) – Complete Game with Lighted Stadium. See order form under games and accessories.



#6077

your game goes here.

DELUXE ELECTRIC FOOTBALL GAME TABLE

COMPLETE WITH 2 NFL TEAMS AND ALL PARTS TO PLAY



#2000

This Is The Electric Football Game Table For You!

- Large 24" x 48" playing surface and 34 1/4" H
- Perfectly balanced with an all-new electrical system
- Great speed control – No dead spots
- Real solid oak wood with 2 sets of legs to stand alone or place on a table top
- An attractive game table that you will be proud to display

A great GIFT for you and your family or anyone who loves Electric Football

GAMES, SCOREBOARD AND LIGHTED STADIUM AVAILABLE AT YOUR LOCAL RETAILER, IN CATALOGS OR USE ORDER FORM TO ORDER. ALSO, ORDER ONLINE AT WWW.MIGGLE.COM.

PARTS, GAMES AND ACCESSORIES ORDER FORM

ALL PRODUCTS ALSO SHOWN IN OUR ONLINE STORE AT WWW.MIGGLE.COM

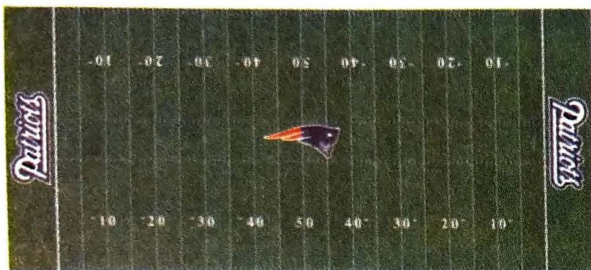


Add one of our "Kistner" Custom Field Covers to your Electric Football game and your gameboard will look like your favorite team's field—exceptional attention to detail and true NFL colors. **Available in all 32 NFL Teams.**

These Field Covers are made for the Super Bowl gameboard size or Tudor's #620 gameboard size. Special orders for ANY and ALL size playing fields for all NFL teams are available by request by calling our toll free number at (877)791-6644.

What Makes These Field Covers So Great...

- Quality film substrate – Not paper
- AccuShield coating – Not laminate
- Vector image digital graphics
- Revolutionary removable adhesive
- Can be removed and reused



NFL Field Covers

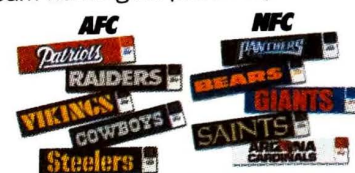
NOTE:
Custom Field Covers and Siderail Kits are Made to Order and Can Not be Returned (Shipped Separately)

NFL TEAM NAMES FOR END ZONES

NFL End Zone Team Names—Customize your gameboard to show your favorite teams with NFL logos. Available in all 32 NFL Teams and includes team name goal post wraparounds.

NOW available in two sizes: "L" for games prior to 1997 (1 15/16" x 7 3/4") and "XL" for all other Super Bowl games (2 11/16" x 11 1/2")

ORDER ON PAGE 14



CUSTOM NFL FIELD COVERS – SUPER BOWL SIZE (S) – TUDOR #620 SIZE (T)

ITEM	NO.	QTY.	PRICE	NO.	QTY.	PRICE	ITEM	NO.	QTY.	PRICE	NO.	QTY.	PRICE
AFC							NFC						
BENGALS	FC-02-S		\$69.95	FC-02-T		\$69.95	BEARS	FC-01-S		\$69.95	FC-01-T		\$69.95
BILLS	FC-03-S		\$69.95	FC-03-T		\$69.95	BUCS	FC-06-S		\$69.95	FC-06-T		\$69.95
BRONCOS	FC-04-S		\$69.95	FC-04-T		\$69.95	CARDINALS	FC-07-S		\$69.95	FC-07-T		\$69.95
BROWNS	FC-05-S		\$69.95	FC-05-T		\$69.95	COWBOYS	FC-11-S		\$69.95	FC-11-T		\$69.95
CHARGERS	FC-08-S		\$69.95	FC-08-T		\$69.95	EAGLES	FC-13-S		\$69.95	FC-13-T		\$69.95
CHIEFS	FC-09-S		\$69.95	FC-09-T		\$69.95	FALCONS	FC-14-S		\$69.95	FC-14-T		\$69.95
COLTS	FC-10-S		\$69.95	FC-10-T		\$69.95	49 ERS	FC-15-S		\$69.95	FC-15-T		\$69.95
DOLPHINS	FC-12-S		\$69.95	FC-12-T		\$69.95	GIANTS	FC-16-S		\$69.95	FC-16-T		\$69.95
JAGUARS	FC-29-S		\$69.95	FC-29-T		\$69.95	LIONS	FC-18-S		\$69.95	FC-18-T		\$69.95
JETS	FC-17-S		\$69.95	FC-17-T		\$69.95	PACKERS	FC-20-S		\$69.95	FC-20-T		\$69.95
PATRIOTS	FC-21-S		\$69.95	FC-21-T		\$69.95	PANTHERS	FC-30-S		\$69.95	FC-30-T		\$69.95
RAIDERS	FC-22-S		\$69.95	FC-22-T		\$69.95	RAMS	FC-23-S		\$69.95	FC-23-T		\$69.95
RAVENS	FC-31-S		\$69.95	FC-31-T		\$69.95	REDSKINS	FC-24-S		\$69.95	FC-24-T		\$69.95
STEELERS	FC-27-S		\$69.95	FC-27-T		\$69.95	SAINTS	FC-25-S		\$69.95	FC-25-T		\$69.95
TEXANS	FC-33-S		\$69.95	FC-33-T		\$69.95	SEAHAWKS	FC-26-S		\$69.95	FC-26-T		\$69.95
TITANS	FC-32-S		\$69.95	FC-32-T		\$69.95	VIKINGS	FC-28-S		\$69.95	FC-28-T		\$69.95
							SUPERBOWL	SUPERB		\$69.95	SUPERB		\$69.95
TOTAL							TOTAL						

NFL FIELD COVERS

CUSTOM NFL SIDERAIL KIT (SET OF 4 RAILS) – SUPER BOWL SIZE (S) – TUDOR #620 SIZE (T)

ITEM	NO.	QTY.	PRICE	NO.	QTY.	PRICE	ITEM	NO.	QTY.	PRICE	NO.	QTY.	PRICE
AFC							NFC						
BENGALS	SR-02-S		\$69.95	SR-02-T		\$69.95	BEARS	SR-01-S		\$69.95	SR-01-T		\$69.95
BILLS	SR-03-S		\$69.95	SR-03-T		\$69.95	BUCS	SR-06-S		\$69.95	SR-06-T		\$69.95
BRONCOS	SR-04-S		\$69.95	SR-04-T		\$69.95	CARDINALS	SR-07-S		\$69.95	SR-07-T		\$69.95
BROWNS	SR-05-S		\$69.95	SR-05-T		\$69.95	COWBOYS	SR-11-S		\$69.95	SR-11-T		\$69.95
CHARGERS	SR-08-S		\$69.95	SR-08-T		\$69.95	EAGLES	SR-13-S		\$69.95	SR-13-T		\$69.95
CHIEFS	SR-09-S		\$69.95	SR-09-T		\$69.95	FALCONS	SR-14-S		\$69.95	SR-14-T		\$69.95
COLTS	SR-10-S		\$69.95	SR-10-T		\$69.95	49 ERS	SR-15-S		\$69.95	SR-15-T		\$69.95
DOLPHINS	SR-12-S		\$69.95	SR-12-T		\$69.95	GIANTS	SR-16-S		\$69.95	SR-16-T		\$69.95
JAGUARS	SR-29-S		\$69.95	SR-29-T		\$69.95	LIONS	SR-18-S		\$69.95	SR-18-T		\$69.95
JETS	SR-17-S		\$69.95	SR-17-T		\$69.95	PACKERS	SR-20-S		\$69.95	SR-20-T		\$69.95
PATRIOTS	SR-21-S		\$69.95	SR-21-T		\$69.95	PANTHERS	SR-30-S		\$69.95	SR-30-T		\$69.95
RAIDERS	SR-22-S		\$69.95	SR-22-T		\$69.95	RAMS	SR-23-S		\$69.95	SR-23-T		\$69.95
RAVENS	SR-31-S		\$69.95	SR-31-T		\$69.95	REDSKINS	SR-24-S		\$69.95	SR-24-T		\$69.95
STEELERS	SR-27-S		\$69.95	SR-27-T		\$69.95	SAINTS	SR-25-S		\$69.95	SR-25-T		\$69.95
TEXANS	SR-33-S		\$69.95	SR-33-T		\$69.95	SEAHAWKS	SR-26-S		\$69.95	SR-26-T		\$69.95
TITANS	SR-32-S		\$69.95	SR-32-T		\$69.95	VIKINGS	SR-28-S		\$69.95	SR-28-T		\$69.95
							SUPERBOWL	SUPERB		\$69.95	SUPERB		\$69.95
TOTAL							TOTAL						

NFL SIDERAIL KIT

**NOTE: ALL FIELD COVERS AND SIDERAILS SHIPPED SEPARATELY, NOT WITH PARTS ORDER
ADD \$10.00 SHIPPING AND HANDLING FOR THESE ITEMS**

CONTINUED ON NEXT PAGE

ORDER FORM (CONTINUED)

GAMES AND ACCESSORIES (EXPRESS CHARGES DO NOT APPLY TO THESE ITEMS)

GAMES AND ACCESSORIES

ITEM	NO.	QTY.	PRICE	ITEM	NO.	QTY.	PRICE
REGULAR ELECTRIC FOOTBALL (ADD \$10.00 S&H)	6071		\$49.95	SWEETSTAKES DERBY ELECTRIC HORSE RACING (ADD \$10.00 SHIPPING & HANDLING)	8503		\$29.95
SUPERBOWL ELECTRIC FOOTBALL (ADD \$10.00 S&H)	6072		\$69.95	ELECTRIC BASEBALL (ADD \$10.00 SHIPPING & HANDLING)	6074		\$49.95
REGULAR ELECTRIC FOOTBALL (ADD \$15.00 S&H)	620		\$129.95	ACTION BOWL (ADD \$5.50 SHIPPING & HANDLING)	6075		\$14.95
ANY GAME (ADD \$15 SHIPPING & HANDLING)	6076		\$149.95	ELECTRONIC SCOREBOARD (ADD \$7.50 S&H)	6078		\$49.95
DELUXE GAME TABLE (ADD \$40.00 SHIPPING & HANDLING)	2000		\$489.95	FOOTBALL STADIUM (ONLY) (ADD \$10.00 S&H)	6077		\$89.95
DELUXE PRO ELECTRIC FOOTBALL (ADD \$10.00 S&H)	8500		\$29.95	LARGE STORAGE/TRAVEL CARRY CASE (HOLDS 8 TEAMS)	CCL-1		\$24.99
NFL PORTABLE ELECTRIC FOOTBALL (ADD \$10.00 S&H)	8501		\$39.95	SMALL STORAGE/TRAVEL CARRY CASE (HOLDS 2 TEAMS)	CCS-2		\$14.99
SPEEDWAY ELECTRIC AUTO RACING (ADD \$10.00 S&H)	8502		\$29.95	TOTAL			
TOTAL							

UNPAINTED FIGURES - TTQB'S - BASES - MISCELLANEOUS PARTS

BASES/FOOTBALL MISCELLANEOUS

ITEM	NO.	QTY.	PRICE	ITEM	NO.	QTY.	PRICE
PROLINE PLAYERS (ASST. #1 SET OF 5)	PLP-1		\$6.00	PROLINE STRONG BASES WITH A ROUNDED FRONT			
PROLINE PLAYERS (ASST. #2 SET OF 5)	PLP-2		\$6.00	12 ROOKIE STYLE BASES	PL2SRFRB		\$5.00
167" BIG MEN - (UNPAINTED - SET OF 11)	67-BM		\$6.00	12 TOTAL TEAM CONTROL BASES (TTC)	PL2SRFTT		\$6.00
11 WHITE FIGURES (UNPAINTED)	5-6019-W		\$4.00	12 SINGLE CLIP BASES	PL2SRFSC		\$7.00
11 RED FIGURES (UNPAINTED)	5-6019-R		\$4.00	PROLINE FAST BASES WITH A ROUNDED FRONT			
11 QUARTERBACKS (2 PER PACK)	5-6005		\$3.00	12 ROOKIE STYLE BASES	PL2FRFRB		\$5.00
BAG OF 22 CLASSIC ROOKIE BASES (SINGLE CLIP BASE)	5-6001-CL		\$10.00	12 TOTAL TEAM CONTROL BASES (TTC)	PL2FRFTT		\$6.00
BAG OF 24 ROOKIE/REG BASES	5-6001		\$5.00	12 SINGLE CLIP BASES	PL2FRFSC		\$7.00
BAG OF 24 TTC BASES	5-6000		\$6.00	PROLINE DELUXE ACCESSORY PACK (SEE PAGE 10)	5-6024		\$10.00
PATRIOTIC SUPER FAST BASES, 12 TTC BASES, 12 ROOKIE BASES (MOLDED IN RED, WHITE AND BLUE COLORS)	PSFB		\$8.00	FOOTBALL ACCESSORY SPRUE	5-6014		\$6.00
2003 PURPLE SPEED BASES	2003-CB		\$8.00	10 YARD CHAIN W/BALL MARKER	5-6007		\$1.50
2004 POLO GREEN SPEED BASES	2004-CB		\$8.00	MARKER MAGNETS (PRICE EACH)	5-6013		\$0.50
2005 BLACK SPEED BASES (PROLINE)	2005-CB		\$8.00	DOWN MARKER	5-6006		\$1.50
2006 ORANGE SPEED BASES	2006-CB		\$8.00	GOAL POSTS SUPER BOWL FOOTBALL (EACH)	5-6008A		\$1.50
"OLD FROSTY" BASES (LIGHT GREEN)	5-OFB		\$8.00	"MINUTE" WHEEL	5-6009		\$1.00
PROLINE STRONG BASES WITH A STRAIGHT FRONT				"SECOND" WHEEL	5-6010		\$1.00
12 ROOKIE STYLE BASES	PL2SSFRB		\$5.00	SPEED CONTROL KNOB	5-6011		\$1.00
12 TOTAL TEAM CONTROL BASES (TTC)	PL2SSFTT		\$6.00	SCORING KNOBS - 6 PER SET	5-6012		\$1.50
12 SINGLE CLIP BASES	PL2SSFSC		\$7.00	SCOREBOARD CLIPS (EACH)	5-6023		\$1.50
PROLINE FAST BASES WITH A STRAIGHT FRONT				6 FOOTBALLS - 1 TIMER WASHER (ON STRIP)	5-6016		\$1.50
12 ROOKIE STYLE BASES	PL2FSFRB		\$5.00	PROLINE FOOTBALLS (6 PER BAG)	PLFB		\$3.00
12 TOTAL TEAM CONTROL BASES (TTC)	PL2FSFTT		\$6.00	FOOTBALL RULEBOOK	5-6017		\$1.00
12 SINGLE CLIP BASES	PL2FSFSC		\$7.00	SCOREBOARD PAD	5-6018		\$1.00
				REPLACEMENT SCOREBOARDS	RSB-1		\$7.50
				6 FORMULA-TYPE RACE CARS WITH BASES	5-6021		\$10.00
				6 NASCAR-TYPE RACE CARS WITH BASES	5-6022		\$10.00
				6 HORSES AND JOCKEYS WITH BASES	5-6025		\$10.00
TOTAL				TOTAL			

NFL QUARTERBACK SETS

NFL QUARTERBACK SETS

ITEM	QTY. HOME (H)	QTY. AWAY (W)	PRICE	ITEM	QTY.	PRICE
16 AFC QUARTERBACKS (CURRENT UNIFORMS)			\$10.00/SET	16 AFC QB'S MIXED (HOME AND AWAY)		\$10.00/SET
16 NFC QUARTERBACKS (CURRENT UNIFORMS)			\$10.00/SET	16 NFC QB'S MIXED (HOME AND AWAY)		\$10.00/SET
				16 ASSORTED QUARTERBACKS (UNPAINTED)		\$7.50/SET
TOTAL				TOTAL		

SIDELINE ACCESSORIES

SIDELINE FIGURES WITH MAGNETIC BASES

ITEM	NO.	QTY.	PRICE	ITEM	NO.	QTY.	PRICE
OFFICIALS: UMPIRE AND 2 REFEREES	5-94-0		\$7.50	6 CHEERLEADERS HAND PAINTED IN RED	5-92-0		\$7.50
BACKFIELD COACH, LINE COACH, AND HEAD COACH	5-93-0		\$7.50	6 CHEERLEADERS HAND PAINTED IN BLUE	5-91-0		\$7.50
REPORTER, TEAM OWNER, AND CAMERA MAN	5-90-0		\$7.50				
TOTAL				TOTAL			

GRAB BAG SPECIAL - "RETIRED" UNIFORMS (LIMITED QUANTITIES)

GRAB BAG SPECIAL

ITEM	NO.	QTY.	PRICE
12 AFC TEAMS - (OLDER TEAMS) NO PICKING - NO EXCHANGES	5-6030		\$25.00
12 NFC TEAMS - (OLDER TEAMS) NO PICKING - NO EXCHANGES	5-6031		\$25.00
TOTAL			

NEWSLETTER

NEWSLETTER

ITEM	QTY.	PRICE
NEWSLETTER ONE YEAR (1 FALL ISSUE) SPRING ISSUE POSTED ON MIGGLE'S WEB SITE ONLY		\$3.00
TOTAL		

CONTINUED ON NEXT PAGE

ORDER FORM (CONTINUED)

NFL TEAMS

SETS OF 11 NFL TEAM PLAYERS HAND PAINTED IN OFFICIAL UNIFORMS						END ZONE TEAM NAMES						UNIFORM NUMBERS						
DARK JERSEYS			WHITE JERSEYS			SIZE L (1 ¹³ / ₁₆ " x 7 ¹ / ₂ ")			SIZE XL (2 ¹ / ₁₆ " x 11 ¹ / ₂ ")			FOR DARK JERSEYS			FOR WHITE JERSEYS			
AFC	NO.	QTY.	PRICE	NO.	QTY.	PRICE	NO.	QTY.	PRICE	NO.	QTY.	PRICE	NO.	QTY.	PRICE	NO.	QTY.	PRICE
BENGALS	5-02-D		\$8.50	5-02-W		\$8.50	5-02-L		\$1.50	5-02-XL		\$2.50	5-6024-W		\$1.50	5-6024-B		\$1.50
BILLS	5-03-D		\$8.50	5-03-W		\$8.50	5-03-L		\$1.50	5-03-XL		\$2.50	5-6024-W		\$1.50	5-6024-BL		\$1.50
BRONCOS	5-04-D		\$8.50	5-04-W		\$8.50	5-04-L		\$1.50	5-04-XL		\$2.50	5-6024-W		\$1.50	5-6024-BL		\$1.50
BROWNS	5-05-D		\$8.50	5-05-W		\$8.50	5-05-L		\$1.50	5-05-XL		\$2.50	5-6024-W		\$1.50	5-6024-BR		\$1.50
CHARGERS	5-08-D		\$8.50	5-08-W		\$8.50	5-08-L		\$1.50	5-08-XL		\$2.50	5-6024-W		\$1.50	5-6024-BL		\$1.50
CHIEFS	5-09-D		\$8.50	5-09-W		\$8.50	5-09-L		\$1.50	5-09-XL		\$2.50	5-6024-W		\$1.50	5-6024-R		\$1.50
COLTS	5-10-D		\$8.50	5-10-W		\$8.50	5-10-L		\$1.50	5-10-XL		\$2.50	5-6024-W		\$1.50	5-6024-BL		\$1.50
DOLPHINS	5-12-D		\$8.50	5-12-W		\$8.50	5-12-L		\$1.50	5-12-XL		\$2.50	5-6024-W		\$1.50	5-6024-A		\$1.50
JAGUARS	5-29-D		\$8.50	5-29-W		\$8.50	5-29-L		\$1.50	5-29-XL		\$2.50	5-6024-W		\$1.50	5-6024-A		\$1.50
JETS	5-17-D		\$8.50	5-17-W		\$8.50	5-17-L		\$1.50	5-17-XL		\$2.50	5-6024-W		\$1.50	5-6024-G		\$1.50
OILERS	5-19-D		\$8.50	5-19-W		\$8.50	5-19-L		\$1.50	5-19-XL		\$2.50	5-6024-W		\$1.50	5-6024-BL		\$1.50
PATRIOTS	5-21-D		\$8.50	5-21-W		\$8.50	5-21-L		\$1.50	5-21-XL		\$2.50	5-6024-S		\$1.50	5-6024-BL		\$1.50
RAIDERS	5-22-D		\$8.50	5-22-W		\$8.50	5-22-L		\$1.50	5-22-XL		\$2.50	5-6024-W		\$1.50	5-6024-B		\$1.50
RAVENS	5-31-D		\$8.50	5-31-W		\$8.50	5-31-L		\$1.50	5-31-XL		\$2.50	5-6024-W		\$1.50	5-6024-P		\$1.50
STEELERS	5-27-D		\$8.50	5-27-W		\$8.50	5-27-L		\$1.50	5-27-XL		\$2.50	5-6024-W		\$1.50	5-6024-B		\$1.50
TEXANS	5-33-D		\$8.50	5-33-W		\$8.50	5-33-L		\$1.50	5-33-XL		\$2.50	5-6024-W		\$1.50	5-6024-R		\$1.50
TITANS	5-32-D		\$8.50	5-32-W		\$8.50	5-32-L		\$1.50	5-32-XL		\$2.50	5-6024-W		\$1.50	5-6024-B		\$1.50
NFC																		
BEARS	5-01-D		\$8.50	5-01-W		\$8.50	5-01-L		\$1.50	5-01-XL		\$2.50	5-6024-W		\$1.50	5-6024-B		\$1.50
BUCS	5-06-D		\$8.50	5-06-W		\$8.50	5-06-L		\$1.50	5-06-XL		\$2.50	5-6024-W		\$1.50	5-6024-R		\$1.50
CARDINALS	5-07-D		\$8.50	5-07-W		\$8.50	5-07-L		\$1.50	5-07-XL		\$2.50	5-6024-W		\$1.50	5-6024-R		\$1.50
COWBOYS	5-11-D		\$8.50	5-11-W		\$8.50	5-11-L		\$1.50	5-11-XL		\$2.50	5-6024-S		\$1.50	5-6024-BL		\$1.50
EAGLES	5-13-D		\$8.50	5-13-W		\$8.50	5-13-L		\$1.50	5-13-XL		\$2.50	5-6024-W		\$1.50	5-6024-G		\$1.50
FALCONS	5-14-D		\$8.50	5-14-W		\$8.50	5-14-L		\$1.50	5-14-XL		\$2.50	5-6024-W		\$1.50	5-6024-B		\$1.50
49ERS	5-15-D		\$8.50	5-15-W		\$8.50	5-15-L		\$1.50	5-15-XL		\$2.50	5-6024-W		\$1.50	5-6024-R		\$1.50
GIANTS	5-16-D		\$8.50	5-16-W		\$8.50	5-16-L		\$1.50	5-16-XL		\$2.50	5-6024-W		\$1.50	5-6024-R		\$1.50
LIONS	5-18-D		\$8.50	5-18-W		\$8.50	5-18-L		\$1.50	5-18-XL		\$2.50	5-6024-W		\$1.50	5-6024-BL		\$1.50
PACKERS	5-20-D		\$8.50	5-20-W		\$8.50	5-20-L		\$1.50	5-20-XL		\$2.50	5-6024-W		\$1.50	5-6024-G		\$1.50
PANTHERS	5-30-D		\$8.50	5-30-W		\$8.50	5-30-L		\$1.50	5-30-XL		\$2.50	5-6024-W		\$1.50	5-6024-B		\$1.50
RAMS	5-23-D		\$8.50	5-23-W		\$8.50	5-23-L		\$1.50	5-23-XL		\$2.50	5-6024-GO		\$1.50	5-6024-BL		\$1.50
REDSKINS	5-24-D		\$8.50	5-24-W		\$8.50	5-24-L		\$1.50	5-24-XL		\$2.50	5-6024-W		\$1.50	5-6024-R		\$1.50
SAINTS	5-25-D		\$8.50	5-25-W		\$8.50	5-25-L		\$1.50	5-25-XL		\$2.50	5-6024-GO		\$1.50	5-6024-GO		\$1.50
SEAHAWKS	5-26-D		\$8.50	5-26-W		\$8.50	5-26-L		\$1.50	5-26-XL		\$2.50	5-6024-W		\$1.50	5-6024-BL		\$1.50
VIKINGS	5-28-D		\$8.50	5-28-W		\$8.50	5-28-L		\$1.50	5-28-XL		\$2.50	5-6024-W		\$1.50	5-6024-P		\$1.50
TOTAL																		

NOTE: NUMBERS AND BASES NOT INCLUDED AND MUST BE ORDERED SEPARATELY.

"67" BIG MEN PAINTED TEAMS

SETS OF 11 NFL TEAM PLAYERS HAND PAINTED IN OFFICIAL UNIFORMS						END ZONE TEAM NAMES						UNIFORM NUMBERS						
DARK JERSEYS			WHITE JERSEYS			SIZE L (1 ¹³ / ₁₆ " x 7 ¹ / ₂ ")			SIZE XL (2 ¹ / ₁₆ " x 11 ¹ / ₂ ")			FOR DARK JERSEYS			FOR WHITE JERSEYS			
AFC	NO.	QTY.	PRICE	NO.	QTY.	PRICE	NO.	QTY.	PRICE	NO.	QTY.	PRICE	NO.	QTY.	PRICE	NO.	QTY.	PRICE
BENGALS	67-02-D		\$10.00	67-02-W		\$10.00	5-02-L		\$1.50	5-02-XL		\$2.50	5-6024-W		\$1.50	5-6024-B		\$1.50
BILLS	67-03-D		\$10.00	67-03-W		\$10.00	5-03-L		\$1.50	5-03-XL		\$2.50	5-6024-W		\$1.50	5-6024-BL		\$1.50
BRONCOS	67-04-D		\$10.00	67-04-W		\$10.00	5-04-L		\$1.50	5-04-XL		\$2.50	5-6024-W		\$1.50	5-6024-BL		\$1.50
BROWNS	67-05-D		\$10.00	67-05-W		\$10.00	5-05-L		\$1.50	5-05-XL		\$2.50	5-6024-W		\$1.50	5-6024-BR		\$1.50
CHARGERS	67-08-D		\$10.00	67-08-W		\$10.00	5-08-L		\$1.50	5-08-XL		\$2.50	5-6024-W		\$1.50	5-6024-BL		\$1.50
CHIEFS	67-09-D		\$10.00	67-09-W		\$10.00	5-09-L		\$1.50	5-09-XL		\$2.50	5-6024-W		\$1.50	5-6024-R		\$1.50
COLTS	67-10-D		\$10.00	67-10-W		\$10.00	5-10-L		\$1.50	5-10-XL		\$2.50	5-6024-W		\$1.50	5-6024-BL		\$1.50
DOLPHINS	67-12-D		\$10.00	67-12-W		\$10.00	5-12-L		\$1.50	5-12-XL		\$2.50	5-6024-W		\$1.50	5-6024-A		\$1.50
JAGUARS	67-29-D		\$10.00	67-29-W		\$10.00	5-29-L		\$1.50	5-29-XL		\$2.50	5-6024-W		\$1.50	5-6024-A		\$1.50
JETS	67-17-D		\$10.00	67-17-W		\$10.00	5-17-L		\$1.50	5-17-XL		\$2.50	5-6024-W		\$1.50	5-6024-G		\$1.50
OILERS	67-19-D		\$10.00	67-19-W		\$10.00	5-19-L		\$1.50	5-19-XL		\$2.50	5-6024-W		\$1.50	5-6024-BL		\$1.50
PATRIOTS	67-21-D		\$10.00	67-21-W		\$10.00	5-21-L		\$1.50	5-21-XL		\$2.50	5-6024-S		\$1.50	5-6024-BL		\$1.50
RAIDERS	67-22-D		\$10.00	67-22-W		\$10.00	5-22-L		\$1.50	5-22-XL		\$2.50	5-6024-W		\$1.50	5-6024-B		\$1.50
RAVENS	67-31-D		\$10.00	67-31-W		\$10.00	5-31-L		\$1.50	5-31-XL		\$2.50	5-6024-W		\$1.50	5-6024-P		\$1.50
STEELERS	67-27-D		\$10.00	67-27-W		\$10.00	5-27-L		\$1.50	5-27-XL		\$2.50	5-6024-W		\$1.50	5-6024-B		\$1.50
TEXANS	67-33-D		\$10.00	67-33-W		\$10.00	5-33-L		\$1.50	5-33-XL		\$2.50	5-6024-W		\$1.50	5-6024-R		\$1.50
TITANS	67-32-D		\$10.00	67-32-W		\$10.00	5-32-L		\$1.50	5-32-XL		\$2.50	5-6024-W		\$1.50	5-6024-B		\$1.50
NFC																		
BEARS	67-01-D		\$10.00	67-01-W		\$10.00	5-01-L		\$1.50	5-01-XL		\$2.50	5-6024-W		\$1.50	5-6024-B		\$1.50
BUCS	67-06-D		\$10.00	67-06-W		\$10.00	5-06-L		\$1.50	5-06-XL		\$2.50	5-6024-W		\$1.50	5-6024-R		\$1.50
CARDINALS	67-07-D		\$10.00	67-07-W		\$10.00	5-07-L		\$1.50	5-07-XL		\$2.50	5-6024-W		\$1.50	5-6024-R		\$1.50
COWBOYS	67-11-D		\$10.00	67-11-W		\$10.00	5-11-L		\$1.50	5-11-XL		\$2.50	5-6024-S		\$1.50	5-6024-BL		\$1.50
EAGLES	67-13-D		\$10.00	67-13-W		\$10.00	5-13-L		\$1.50	5-13-XL		\$2.50	5-6024-W		\$1.50	5-6024-G		\$1.50
FALCONS	67-14-D		\$10.00	67-14-W		\$10.00	5-14-L		\$1.50	5-14-XL		\$2.50	5-6024-W		\$1.50	5-6024-B		\$1.50
49ERS	67-15-D		\$10.00	67-15-W		\$10.00	5-15-L		\$1.50	5-15-XL		\$2.50	5-6024-W		\$1.50	5-6024-R		\$1.50
GIANTS	67-16-D		\$10.00	67-16-W		\$10.00	5-16-L		\$1.50	5-16-XL		\$2.50	5-6024-W		\$1.50	5-6024-R		\$1.50
LIONS	67-18-D		\$10.00	67-18-W		\$10.00	5-18-L		\$1.50	5-18-XL		\$2.50	5-6024-W		\$1.50	5-6024-BL		\$1.50
PACKERS	67-20-D		\$10.00	67-20-W		\$10.00	5-20-L		\$1.50	5-20-XL		\$2.50	5-6024-W		\$1.50	5-6024-G		\$1.50
PANTHERS	67-30-D		\$10.00	67-30-W		\$10.00	5-30-L		\$1.50	5-30-XL		\$2.50	5-6024-W		\$1.50	5-6024-B		\$1.50
RAMS	67-23-D		\$10.00	67-23-W		\$10.00	5-23-L		\$1.50	5-23-XL		\$2.50	5-6024-GO		\$1.50	5-6024-BL		\$1.50
REDSKINS	67-24-D		\$10.00	67-24-W		\$10.00	5-24-L		\$1.50	5-24-XL		\$2.50	5-6024-W		\$1.50	5-6024-R		\$1.50
SAINTS	67-25-D		\$10.00	67-25-W		\$10.00	5-25-L		\$1.50	5-25-XL		\$2.50	5-6024-GO		\$1.50	5-6024-GO		\$1.50
SEAHAWKS	67-26-D		\$10.00	67-26-W		\$10.00	5-26-L		\$1.50	5-26-XL		\$2.50	5-6024-W		\$1.50	5-6024-BL		\$1.50
VIKINGS	67-28-D		\$10.00	67-28-W		\$10.00	5-28-L		\$1.50	5-28-XL		\$2.50	5-6024-W		\$1.50	5-6024-P		\$1.50
TOTAL																		

ORDER FORM (CONTINUED)

NFL DIVISIONAL TEAM PACKAGES



AFC North
Cleveland
Pittsburgh
Baltimore
Cincinnati

NFC North
Chicago
Green Bay
Minnesota
Detroit

AFC South
Houston
Tennessee
Indianapolis
Jacksonville

NFC South
New Orleans
Carolina
Tampa Bay
Atlanta

AFC East
New England
Miami
NY Jets
Buffalo

NFC East
Washington
Philadelphia
Dallas
NY Giants

AFC West
San Diego
Oakland
Denver
Kansas City

NFC West
San Francisco
Arizona
Seattle
St. Louis

NOW YOU CAN PURCHASE TEAMS BY DIVISIONS

4 teams in home uniforms
and 4 teams in away
uniforms for a total of
8 teams per package at
\$59.95. (A \$68 Value!)

NFL DIVISIONAL SETS OF 8 TEAMS

DIVISIONS	AFC NORTH	AFC SOUTH	AFC EAST	AFC WEST	NFC NORTH	NFC SOUTH	NFC EAST	NFC WEST	TOTAL SETS AT \$59.95 A SET OF 8 TEAMS (4 HOME - 4 AWAY)	TOTAL \$
TEAMS INCLUDED IN EACH DIVISION	CLEVELAND PITTSBURGH BALTIMORE CINCINNATI	HOUSTON TENNESSEE INDIANAPOLIS JACKSONVILLE	NEW ENGLAND MIAMI NY JETS BUFFALO	SAN DIEGO OAKLAND DENVER KANSAS CITY	CHICAGO GREEN BAY MINNESOTA DETROIT	NEW ORLEANS CAROLINA TAMPA BAY ATLANTA	WASHINGTON PHILADELPHIA DALLAS NY GIANTS	SAN FRANCISCO ARIZONA SEATTLE ST. LOUIS		
QTY. SETS										

NFL DIVISIONAL SETS OF 8 TEAMS

ELECTRIC GRIDIRON PRODUCTS

PRODUCTS	NO.	QTY.	PRICE
DECALS (MIAMI DOLPHINS AWAY)	EG-D		\$25.00 SET
CHIN STRAPS (33 per set) VINYL ADHESIVE, NO GLUE REQUIRED (RESULTS IN REALISTIC LOOK)	NO.	QTY.	
CHIN STRAPS (WHITE) 2-PT. STANDARD HOOK-UP: TO BE APPLIED AT TWO LOW POSITIONS ON HELMET	EG-CS1		\$10.00 SET
CHIN STRAPS (WHITE) 4-PT. LOW HOOK-UP: TO BE APPLIED AT FOUR LOW POSITIONS ON HELMET	EG-CS2		\$10.00 SET
CHIN STRAPS (WHITE) 4-PT. HIGH HOOK-UP: TO BE APPLIED AT FOUR HIGH POSITIONS ON HELMET	EG-CS3		\$10.00 SET
FACE MASK (33 per set)	NO.	QTY.	
FACE MASK (BLACK)	EG-FMB		\$10.00
FACE MASK (GREY)	EG-FMG		\$10.00
FACE MASK (WHITE)	EG-FMW		\$10.00
FACE MASK (NAVY BLUE)	EG-FMNB		\$10.00
FACE MASK (GREEN)	EG-FMGR		\$10.00
FACE MASK (RED)	EG-FMR		\$10.00
FACE MASK (DARK RED)	EG-FMDR		\$10.00
FACE MASK (YELLOW GOLD)	EG-FMYG		\$10.00
FACE MASK (AQUA)	EG-FMA		\$10.00
FACE MASK (PURPLE)	EG-FMP		\$10.00
TOTAL			

ELECTRIC GRIDIRON PRODUCTS

Mail check or money order
along with this entire form to:
MIGGLE TOYS, INC.
1384 Sheridan Road
Highland Park, Illinois 60035
877-432-0140 or 847-432-0140

TOTAL OF ALL PARTS ORDERED	
SHIPPING & HANDLING FOR ORDERS UNDER \$25	\$5.50
SHIPPING & HANDLING FOR ORDERS OVER \$25	\$7.50
SHIPPING & HANDLING FOR ORDERS OVER \$100	\$10.00
SHIPPING & HANDLING FOR GAMES & ACCESSORIES SHOWN ON PAGE 12 & 13	
ADDITIONAL FOR EXPRESS DELIVERY	
GRAND TOTAL	
ENCLOSE THIS AMOUNT ----->	

IMPORTANT: PLEASE READ BEFORE PLACING ORDER.

- TO FACILITATE DELIVERY PRINT YOUR NAME AND ADDRESS CLEARLY.
- REPLACEMENT GAMEBOARDS ARE NOT SOLD SEPARATELY.
- REPLACEMENT PART PRICES SUBJECT TO CHANGE WITHOUT NOTICE.
- ALLOW 4-6 WEEKS FOR DELIVERY WITH PERSONAL CHECK.
- MONEY ORDER PAYMENTS/ONLINE CREDIT CARD ORDERS SHIPPED FASTER.
- NO C.O.D. ORDERS - NO STAMPS - NO CREDIT CARDS.
- SORRY - NO PHONE OR FAX ORDERS.
- PRICES SHOWN ARE FOR DELIVERY TO U.S.A. ADDRESSES ONLY.
- **EXPRESS DELIVERY:** ONLY ORDERS PAID FOR WITH A MONEY ORDER OR ONLINE WITH A CREDIT CARD CAN BE SHIPPED BY EXPRESS. EXPRESS DELIVERIES ARE SHIPPED WITHIN 5 DAYS OF OUR RECEIPT BY AIRBORNE EXPRESS AT AN ADDITIONAL COST OF \$15 IF YOUR ORDER IS UNDER \$25 AND \$20 IF YOUR ORDER IS OVER \$25. PHONE NUMBERS ARE REQUIRED. NO SATURDAY DELIVERIES.
- CALL FOR FREIGHT CHARGES ON ORDERS OVER \$500.00.
- CLAIMS FOR FREIGHT DAMAGED MERCHANDISE MUST BE RECEIVED WITHIN 7 DAYS. ANY OTHER CLAIMS MUST BE MADE WITHIN 30 DAYS.

**FOR PARTS INFORMATION CALL TOLL FREE (877) 791-6644 OR Calls
placed outside USA (815) 389-8388. (7:00 AM to 1:00 PM CST)
Order Online at www.miggle.com (credit cards accepted Online only)
Postage: Prices shown are USA only - Foreign orders priced separately.**

PLEASE PRINT CLEARLY
DATE

NAME _____ PHONE () _____
ADDRESS _____ APT. # _____
CITY _____ STATE _____ ZIP CODE _____ EMAIL ADDRESS: _____

IS THIS A NEW ADDRESS? YES _____ NO _____



Miggle Toys Inc.
1384 Sheridan Road
Highland Park, IL 60035

***** 3-DIGIT 366
112 755 ##



PRESORTED
STANDARD
U. S. POSTAGE
PAID
PERMIT NO. 382
SOUTH HOLLAND, IL

ADD MORE FUN TO YOUR GAME! GREAT ACCESSORIES AND GREAT GIFTS TOO!



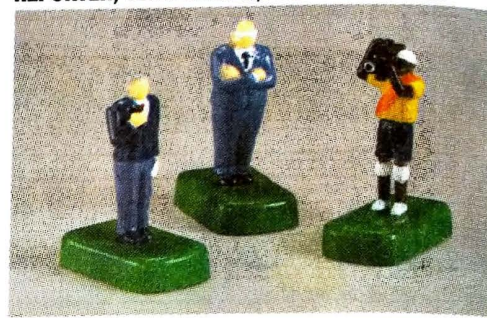
OFFICIALS: UMPIRE AND 2 REFEREES



BACKFIELD COACH, LINE COACH AND HEAD COACH



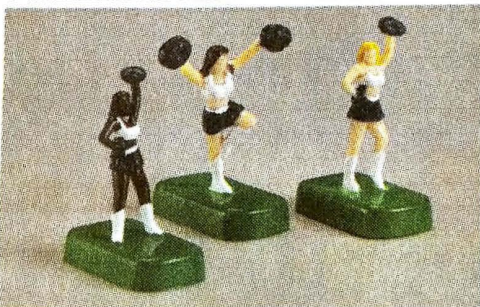
REPORTER, TEAM OWNER, AND CAMERA MAN



6 CHEERLEADERS HANDPAINTED IN RED



6 CHEERLEADERS HANDPAINTED IN BLUE



Magnetic bases
are built in so
that these
pieces do not
move on the
gameboard.



STORAGE OR TRAVEL CARRYING CASES FOR YOUR ELECTRIC FOOTBALL TEAMS!

Two cases available made
from Hi Impact plastic to
withstand damage; inside
the teams travel in the
luxury of a foam holder.
Larger case has center
foam insert.

LARGER case holds **8 teams**
(with or without bases)
for only **\$24.99**

SMALLER case holds **2 teams**
(with or without bases)
for only **\$14.99**

**GREAT GIFT ITEM
FOR YOU OR A FRIEND!**



MORE MIGGLE GAMES FOR YOUR PLEASURE!

Electric Baseball—
realistic and authentic
major league action!

Action Bowl—great for
the little "tykes." set up a
bowling alley in seconds
and roll strikes and spares...
it's so easy.

Available now in our online
store at www.miggle.com
or order on Page 13 of
this newsletter.