

## Testimonials

### Welcome To The M. P. F. L.

This is a brief introduction to the system for playing miniature football. The Operational and format makes this game play very realistically you will not want to go back to the one stop pitch or pass of another board game. MPF is real football scaled down to a board strategy game that will test your X's and O's of football. It will reflect and imitate real football and it is not to be mistaken for electric football. I tried to create a system that is so close to actual football that you might forget you are playing a board game with miniature figures on a vibrating metal board. You will find this to be innovative and challenging.

-Anthony D. Burgess

*"In Anthony's system the player react when the time is right."*

*- Steve Miles Alabama*

*"Another point to A B's system is you had better know your X's ad O's."*

*- Tim Smith Daytona Beach Florida*

*"His format uses all actual football penalties witch brings us more realism to the game, point 2. The scrum is eliminated"*

*- Jamal Lockheart Miami Florida*

*"If it were not for this system I would not be playing this game"*

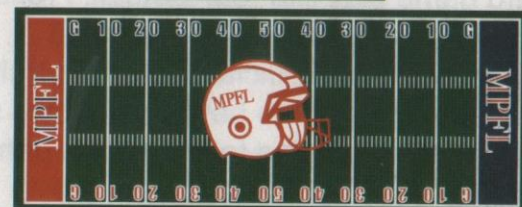
*-Keefe Jackson Fort Washington Maryland*

*"If your a true fan of football seeing this system demonstrated and played you will be hooked, I can guaranteed you that"*

*-Rene Smith Catonsville Maryland*

*"In this system you better bring your A game not your B."*

*-Mike A Carr Temple Hill Maryland*



**Miniature Professional Football League**

# M. P. F. L.

## A Concluding Thought

### Through divine inspiration

I was able to do what people said could never be done, and that is to make this board game play like real football. I reflected back on my experience as a football player coach, and official in order to truly understand this game beyond what we see on Sundays. I wanted to imitate the game that I love, and to change the negative perception of this game. To bring out the true essence of football, and the chess like decisions that are made in, on, and during the game. To break down each position on the field, and to examine it's function and responsibility. To recreate the feelings that are associated with playing the game as well as to test your knowledge of X's and O's

## GENERAL APPEARANCE

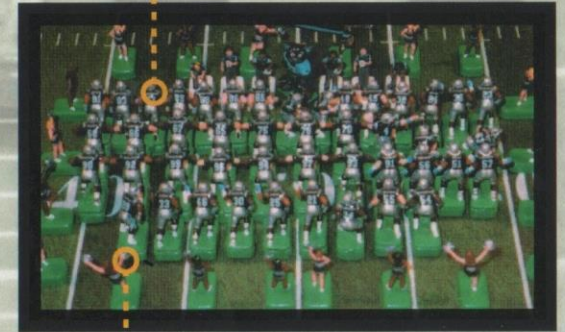
**Figures:** Must have artistic value and appearance and or mimic a football action pose.  
*-See miscellaneous 2*

**Bases:** Similar in size and shape green in color to match the field  
*-See miscellaneous 2*

**Weight:** This system is based on weighted players. The weight shall be under the base. What ever you want to use as weight is fine as long as it is under the base. **USE YOUR IMAGINATION.**

**Note:** Whenever you come into the league, your team has to be inspected. Only when your team has been approved by the league owner may you participate in the games.

Figures  
This is how your team should look.



Base and weight  
Bases are green in color and weight is under the base.